



UNIVERSIDADE ESTADUAL DE CAMPINAS
SISTEMA DE BIBLIOTECAS DA UNICAMP
REPOSITÓRIO DA PRODUÇÃO CIENTÍFICA E INTELLECTUAL DA UNICAMP

Versão do arquivo anexado / Version of attached file:

Versão do Editor / Published Version

Mais informações no site da editora / Further information on publisher's website:

<https://www.hindawi.com/journals/ecam/2016/3606820>

DOI: 10.1155/2016/3606820

Direitos autorais / Publisher's copyright statement:

©2016 by Hindawi. All rights reserved.

DIRETORIA DE TRATAMENTO DA INFORMAÇÃO

Cidade Universitária Zeferino Vaz Barão Geraldo

CEP 13083-970 – Campinas SP

Fone: (19) 3521-6493

<http://www.repositorio.unicamp.br>

Research Article

Acmella oleracea and *Achyrocline satureioides* as Sources of Natural Products in Topical Wound Care

Lais Thiemi Yamane,¹ Eneida de Paula,² Michelle Pedroza Jorge,¹
Verônica Santana de Freitas-Blanco,¹ Ílio Montanari Junior,¹
Glyn Mara Figueira,¹ Luís Adriano Anholetto,³ Patricia Rosa de Oliveira,³
and Rodney Alexandre Ferreira Rodrigues¹

¹Chemical, Biological and Agricultural Research Center (CPQBA), University of Campinas, Campinas, SP, Brazil

²Biology Institute, Department of Biochemistry and Tissue Biology, University of Campinas, Campinas, SP, Brazil

³Institute of Biosciences, Department of Biology, Sao Paulo State University, Rio Claro, SP, Brazil

Correspondence should be addressed to Rodney Alexandre Ferreira Rodrigues; rodney@cpqba.unicamp.br

Received 26 February 2016; Revised 18 May 2016; Accepted 29 August 2016

Academic Editor: Nativ Dudai

Copyright © 2016 Lais Thiemi Yamane et al. This is an open access article distributed under the Creative Commons Attribution License, which permits unrestricted use, distribution, and reproduction in any medium, provided the original work is properly cited.

The Brazilian forests have one of the world's biggest biodiversities. *Achyrocline satureioides* (macela) and *Acmella oleracea* (jambu) are native species from Brazil with a huge therapeutic potential, with proved anti-inflammatory and anesthetic action, respectively. The jambu's crude extract after depigmentation with activated charcoal and macela's essential oil were incorporated in a film made with hydroxyethyl cellulose. Those films were evaluated by mechanical test using a texturometer and anti-inflammatory and anesthetic activities by *in vivo* tests: wound healing and antinociceptive. The film containing the highest concentration of depigmented jambu's extract and macela's essential oil obtained an anesthesia time of 83.6 (± 28.5) min longer when compared with the positive control EMLA®; the same occurred with the wound healing test; the film containing the highest concentration had a higher wound contraction ($62.0\% \pm 12.1$) compared to the positive control allantoin and the histopathological analysis demonstrated that it increases collagen synthesis and epidermal thickening. The results demonstrate that the films have a potential use in skin wounds, pressure sore, and infected surgical wounds treatment.

1. Introduction

The wound dressing market has grown significantly over last 10 years; however fewer dressings have all the required properties for the purpose of wound protection and healing. Natural polymers are of special interest due to low toxicity, high absorption, and swelling capacities; moreover, various active compounds can be incorporated into these polymers [1].

The hydroxyethyl cellulose (HEC) is considered the most abundant natural polymer, renewable, soluble in water, with low toxicity, film-forming, with good stability from pH 2 and pH 12, is relatively inexpensive, and is widely used in various types of dressings to have hemostatic property [2–4]. The prevalence of chronic wounds in the general population is

relatively high; improving wound healing, severe burns, and postoperative remains a challenge due to the high cost of existing therapies [5]. The use of opioids is widely used as anesthetics for postoperative and deep wounds, but there are disadvantages as possible side effects (respiratory depression, nausea, vomiting, constipation, and urinary retention) [6] and antibiotics are generally used to prevent and treat infections; nonetheless their activity is gradually diminishing due to the rise of resistance to these drugs [1].

Topical formulations are noninvasive and with few side effects; a good example is patches, a topical adhesive that have constant and prolonged release, avoiding peak plasma levels, and may reduce the duration of pain [7]. The patch with plant extracts has been used to reduce inflammation and aid in healing [5].

Brazilian biome contains more than 20% of the biodiversity of world [8], with a wide variety of available molecules for human therapy in pharmaceutical, food, cosmetic, and veterinary fields [9]. Two species that are used in popular culture and native of Brazil and South America were used for this study, *Achyrocline satureioides* Lam. (DC) (*Asteraceae*) known as macela or marcela, used in folk medicine as an analgesic, sedative, and abdominal cramping. There is scientific evidence of anti-inflammatory, antispasmodic, and antioxidant action [10]. The essential oil compounds have been identified as α -pinene, copaene, and the isomers β -caryophyllene and α -caryophyllene (or α -humulene); the last two are the major compounds present in essential oil of plants in Brazil [11]. Its main component of interest is the α -humulene, responsible for anti-inflammatory activity [12]. *Acmella oleracea* (L.) RK Jansen (*Asteraceae*), popularly known in Brazil as jambu, is widely used in cooking and also popularly used to treat toothaches, tuberculosis, and anemia and as appetite stimulant [13]; these activities are attributed to bioactive compounds, coumarins (scopoletin), triterpenoids, essential oils (limonene and β -caryophyllene) amino acids, phytosterols, phenolic compounds (vanillic acid, trans-ferulic acid, and trans-isoferulic acid), and N-alkylamides; its main component is spilanthol responsible for anesthetic activity [14–17].

The use of an anesthetic and anti-inflammatory is important to reduce pain and have good wound healing, for reducing the risk of infection and further complications. It is also reported that inflammatory mediators such as histamine and prostaglandin E2 may be related to the inhibition of collagen synthesis and fibroblast proliferation, important components for wound healing [18, 19].

The aim of this work was to develop and to evaluate an anesthetic and anti-inflammatory bioadhesive film containing jambu extract and macela essential oil, by studying its mechanical properties, *in vitro* skin permeation characteristics, and *in vivo* performance, in comparison with commercial formulations.

2. Materials and Methods

2.1. Chemicals. HEC and α -humulene standard (96% purity) were purchased from Sigma-Aldrich Co., Saint Louis, USA. Spilanthol standard (88.5% purity) was purchased from Chromadex, California, USA. Glycerin was purchased from Vetec Química Fina, Rio de Janeiro, Brazil. Transcutol® (ethoxydiglycol) was purchased from Gattefossé®, Lyon, France. Activated carbon was purchased from Carbomafra®, Curitiba, Brazil. Diatomaceous Earth and Tween 80® were purchased from Synth, São Paulo, Brazil. Allantoin was purchased from Fagron, Hong Kong, China.

All other reagents were of analytical grade.

2.2. Plant Material. The plant material was sown and grown in the experimental field of the Multidisciplinary Center for Chemical, Biological and Agricultural Research (CPQBA)/UNICAMP, located in the city of Paulínia, Brazil. This project was authorized by the Council of the Genetic Heritage Management, under protocol number 01232/2014-1.

2.3. Production of Jambu Ethanolic Extract and Treatment with Activated Charcoal. Jambu aerial parts were collected, dried, milled, and extracted 3 times with 96° GL ethanol (1:5 w/v) for 1.5 h. The three fractions were pooled and filtered in Buchner funnel with filter paper under vacuum. Then the crude extract was weighed and treated with 4% of activated charcoal; the mixture crude extract and activated charcoal were placed in a warm bath at 40°C with constant stirring for one hour. The extract was filtered with diatomaceous earth (Celite®) and evaporated at 40°C under reduced pressure (model R-215, Büchi) and then lyophilized until constant weight. Solvent-free extract was stored in a freezer until use.

2.4. Macela Volatile Oil Production. The volatile oil was obtained from fresh inflorescences in Clevenger apparatus by hydrodistillation held for a period of 2 h according González and Marioli [20]. The oil was separated from the water in a separation funnel and anhydrous sodium sulfate was added to remove residual water. The oil was stored in a freezer until use.

2.5. GC-MS Analysis. The analytical monitoring of spilanthol and α -humulene in the extract, essential oil, and films was performed by gas chromatograph coupled with a mass detector (CG-EM, Hewlett Packard 5890, series II, mass selective detector 5970 EI 70 eV) equipped with a fused silica column WCOT, HP5-MS, Agilent®, with 30 m × 0.25 mm × 0.25 μ m of dimension. The analysis conditions were injection temperature: 220°C, detector temperature: 250°C, and temperature program: 60–240°C (3°C/min). The identification and quantification of spilanthol and α -humulene were made by the external standard method with commercial analytical standard [21].

2.6. Preparation and Characterization of HEC Films. To produce the films, 2.5% of HEC was added in 100 mL ultrapure water and the resulting mixture kept under magnetic stirring and heating at 55°C until complete dissolution. The mixture rested until it reaches room temperature and then jambu depigmented crude extract (10.0 and 15.0%), macela's essential oil (1.0 and 1.5%), 5.0% of Transcutol, 0.7% of Tween 80, and 0.7% of glycerin were added. The homogeneous solution was transferred to Nylon plates, which were dried in an oven at 40°C for 24 h.

After drying, the films were removed from the plates and cut with a punch with 17 mm in diameter, size compatible with the wound healing test and antinociceptive activity tests. The films were weighed on an analytical scale (Mettler Toledo, São Paulo, Brazil) and their thickness was measured with a digital caliper (model Cal II, Tesa, Renens, Switzerland).

2.7. Mechanical Resistance Properties. Mechanical properties of the films with extract and essential oil and placebo film (HEC, Transcutol, Tween 80, and glycerin) were evaluated using a texturometer from Stabile Micro Systems (model TA-TX Enhanced, Godalming, United Kingdom) evaluating resistance to perforation, relaxation, and resilience. The determination parameters were set as distance of 30 mm for the perforation resistance tests, distance of 2 mm for both

resilience and relaxation tests, and a force of 5 g for all tests. All determinations were performed in triplicate [22].

2.8. Pharmacological Tests

2.8.1. Animals. Male Wistar rats (250–300 g) and male Swiss mice (25–40 g) were obtained from CEMIB-UNICAMP (Multidisciplinary Center for Biological Research, State University of Campinas, UNICAMP, Campinas, São Paulo, Brazil). All animals were housed in polycarbonate cages, under a climate-controlled environment ($22 \pm 3^\circ\text{C}$ and relative humidity 30–70%), a light/dark 12 h cycle, and feed *ad libitum* with convectional standard palletized laboratory ration (Nuvilab®) and water. Protocols were approved by the UNICAMP Institutional Animal Care and Use Committee, which follows the recommendations of the Guide for the Care and use of Laboratory Animals (CEUA number 3342-1).

2.8.2. Evaluation of Wound Healing Activity in Rats. This assay was performed according to Jorge et al. [23]. Wistar rats were divided in 6 groups of 5 animals each: group I, saline 0.9% (0.5 mL/animal, negative control); group II, allantoin (100 mg/animal, positive control); group III, FI: film with 10.0% of depigmented jambu's extract with 1% of macela's essential oil (250 mg/animal); group IV, FII: film with 15.0% of depigmented jambu's extract with 1.5% of macela's essential oil (250 mg/animal); group V, FIII: placebo film. Cutaneous ulcers were visually examined daily; also photos were taken and the percentage of reduction of the initial lesion area were calculated, by ImageJ® program.

At the end of the experiment the animals were sacrificed by deepening anesthesia (thiopental) and skin samples were removed (epidermis, dermis and hypodermis) of the same treatment site. These were removed from groups 4, allantoin, FI, FII, and FIII, placed in 10% formalin solution and stained with Trichrome Masson and Hematoxylin/Eosin. By storage issues the saline group was lost. The stained slides were examined by light microscopy.

2.8.3. Tail-Flick Test in Mice. This assay was performed according to de Araujo et al. [24], with some modifications, such as cut-off time, intervals measurement, and animal employed. The animals were placed in a horizontal acrylic restraint with the distal portion of the tail free and exposed to heat from a lamp ($55 \pm 1^\circ\text{C}$). The timer stopped when the exposed rat tail flicks, and the interval between switching on the light and flick of the tail was recorded (latency time). A 10 s cut-off time was used to avoid thermal injury, and the baseline (normal response to the noxious stimulus) was recorded before starting the experiments. The animals were divided into 4 groups: group I, FI; group II, FII; group III, FIII; and group IV, EMLA 150 mg/animal (positive control). The films and EMLA were applied to 2 cm from the base of the animal's tail for 5 min; after its removal, the tail was exposed to light focused on the same region where the film was applied and the test was started after the tail removal. The measurements were made every 15 min until the animal returned to its baseline response to noxious stimuli.

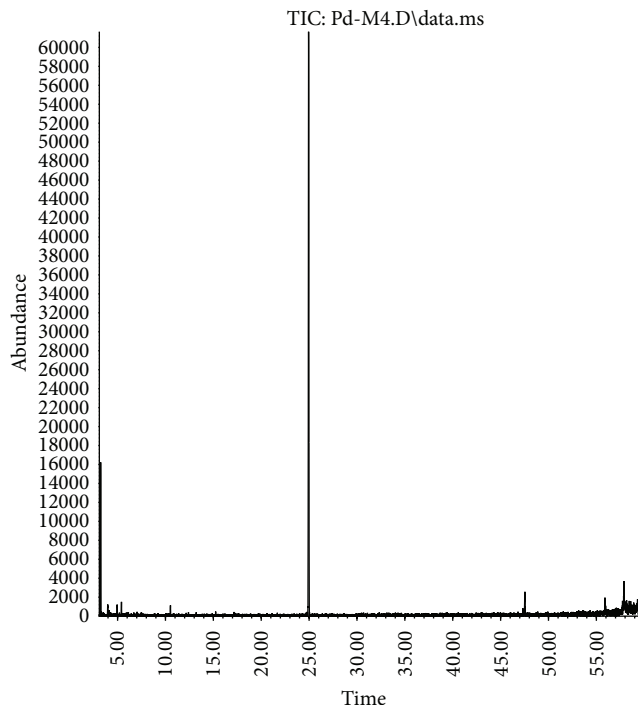


FIGURE 1: GC-MS chromatogram of commercial analytical standard of α -humulene.

2.9. Statistical Analysis. Characterization and *in vivo* pharmacological data were expressed as percentage or mean \pm SD and analyzed by one-way analysis of variance (one-way ANOVA) with Tukey-Kramer post hoc tests using Graph Pad Instat (Graph Pad Software Inc., USA).

3. Results

3.1. Yield from Extraction Processes and GC-MS Analysis. The average yield of depigmented jambu crude extract on a dry basis was 3.7% and average yield of macela's essential oil was 0.04%.

The chromatograms obtained by GC-MS analysis of commercial analytical standards are illustrated in Figure 1 (α -humulene) and Figure 3 (spilanthol) and the macela's essential oil and jambu extract in Figures 2 and 4, respectively.

3.2. Preparation and Characterization of HEC Films. The formulations remained homogeneous, dried after 24 hours in an oven, and had a good appearance. All films were characterized by weight and thickness; the weight of the film with the highest concentration was in the range of 0.2506 ± 0.0127 g/film and the film with lower concentration was in the range of 0.2509 ± 0.0135 g/film and the HEC film was in the range of 0.1972 ± 0.0134 g/film and the thickness was in the range of 0.9308 ± 0.083 mm for the film with the highest concentration and 0.9292 ± 0.125 mm for the film with lower concentration and 0.7901 ± 0.058 mm for the HEC film.

3.3. Mechanical Resistance Properties. The results produced during evaluation of the mechanical resistance of the films

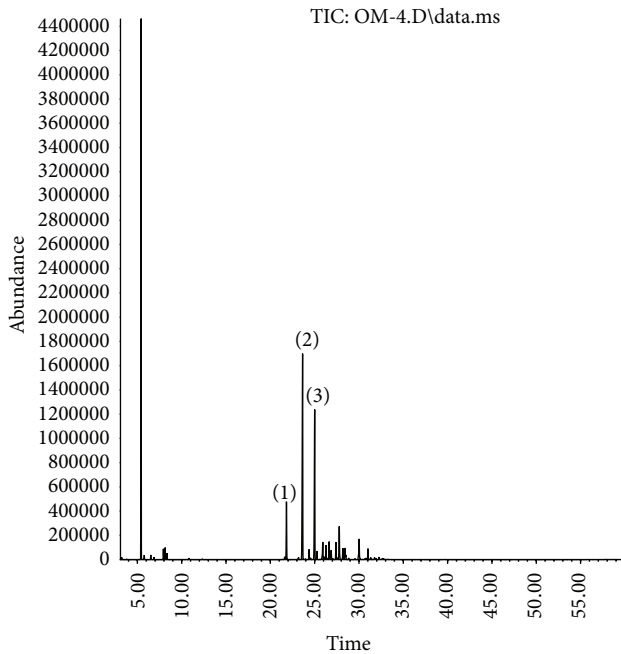


FIGURE 2: GC-MS chromatogram of macela's essential oil. Major compounds are spotlighted by (1) copaene, (2) β -caryophyllene, and (3) α -humulene.

with respect to perforation, relaxation, and resilience are displayed in Table 1. The FIII exhibited a higher resistance than the other two formulations containing extract and essential oil. There was no significant difference statistical between treatments FI and FII.

3.4. Evaluation of Wound Healing Activity in Rats. Macroscopic evaluation of the wounds was performed on days 0 to 10. After 10 days of treatment, the animals treated with saline were in pain and a purulent exudate was found with reddish color, while the other groups had a more docile behavior and also there was the formation of crusts without pus. Wound healing of the skin incision was determined by the percentage of wound surface covered by regenerating epidermis and is illustrated in Figure 5. The treatment FII had the highest percentage of wound contraction $62.38\% \pm 12.11$, with statistical significance with saline. Treatments FI ($56.65\% \pm 10.23$) and FIII ($47.20\% \pm 4.3$) had a higher percentage of wound contraction than the control (Allantoin: 44.83 ± 4.32). Treatment with saline, as expected, showed the lowest percentage of contraction ($41.00\% \pm 4.3$). The control and the formulations showed a progressive reduction in wounded area during the experiment.

Histopathological analysis was made in an optical microscope (Leica DM 750, Illinois, USA) coupled to a digital camera (Leica ICC50HD, Illinois, USA).

The results from the *in vivo* study according to the images demonstrated that the positive control (Figures 6(a), 7(a), and 7(b)) and treatment FIII (Figures 6(b), 7(c), and 7(d)) did not help with the improvement of fibroblast production and the rearrangement of collagen fibers, when compared

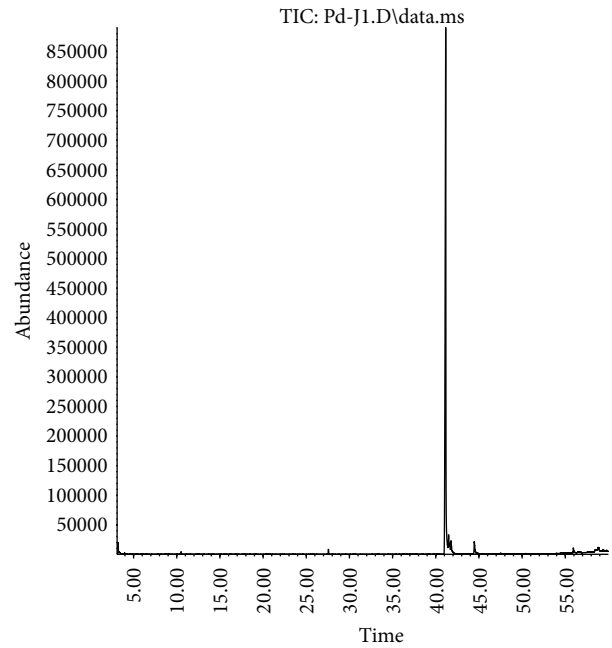


FIGURE 3: GC-MS chromatogram of commercial analytical standard of spilanthol.

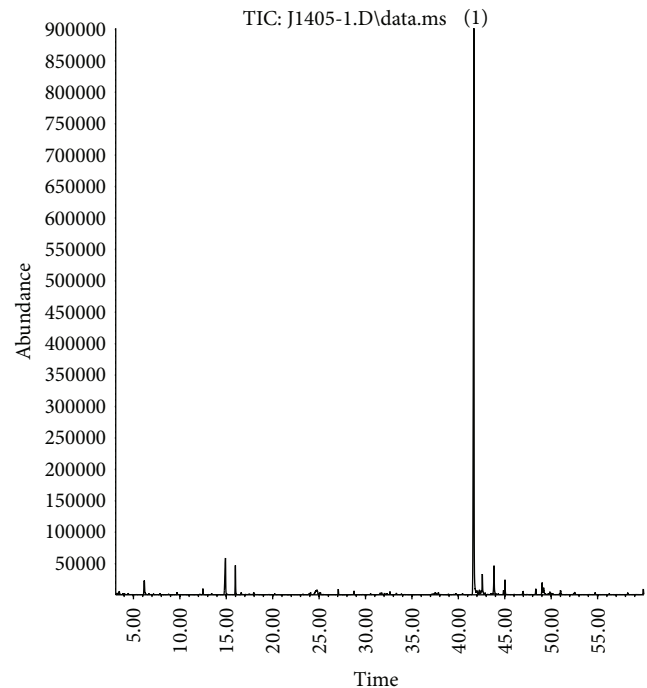


FIGURE 4: GC-MS chromatogram of jambu extract. Spilanthol peak is spotlighted by (1).

with treatments FI/FII. The treatments FI (Figures 6(c), 7(e), and 7(f)) and FII (Figures 6(d), 7(g), and 7(h)) showed a better distribution of collagen fibers (C), demonstrated by the purplish blue color sections stained with Trichrome Masson (TM) and by the intense pink color stained with Hematoxylin/Eosin (HE). Furthermore, both these treatments

TABLE 1: Results from the mechanical resistance tests (kg) performed to films, relative to perforation, relaxation, and resilience, as a function of applied force (kg) (AUC).

Films	Perforation		Relaxation		Resilience	
	Force (g)	AUC (g/s)	Force (g)	AUC (g/s)	Force (g)	AUC (g/s)
FI	53.2 ± 1.6	286.7 ± 8.4	15.1 ± 1.1	40.3 ± 2.1	10.2 ± 5.3	29.8 ± 14.2
FII	41.3 ± 8.6	393.2 ± 118.5	23.9 ± 3.5	55.2 ± 7.5	21.5 ± 5.6	50.8 ± 11.2
FIII*	2887.2 ± 254.3	11376.0 ± 936.0	101.8 ± 3.6	136.7 ± 28.0	77.6 ± 21.2	116.0 ± 19.1

$n = 3$, AUC, area under the curve; FI: film with 10.0% of jambu's extract and 1.0% of macela's essential oil; FII: film with 15.0% of jambu's extract and 1.5% of macela's essential oil; FIII: placebo film (* $p < 0.05$).

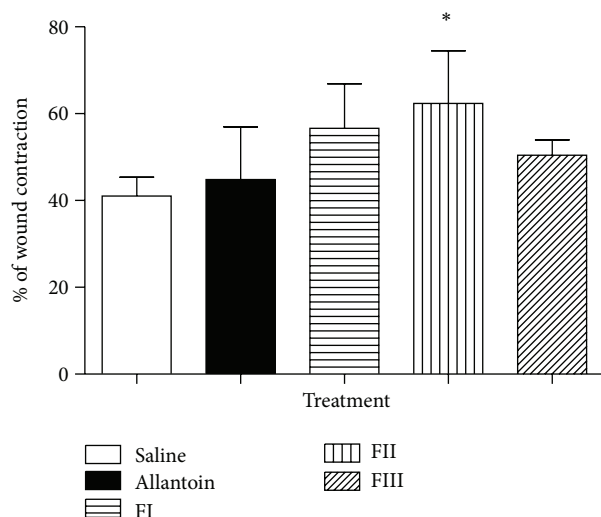


FIGURE 5: Evaluation of wound contraction in different treatments during 10 days (* $p > 0.05$, $n = 5$).

showed higher fibroblasts production, demonstrated by their cores as indicated by arrows in Figure 7. Regarding the thickening of the epidermis (EP), the placebo film showed the smallest epidermis thickness, whereas the other treatments showed a greater thickening of this region.

3.5. Tail-Flick Test. Figure 8 illustrates the analgesic efficacy of the EMLA commercial cream and the two different films ($p > 0.05$, $n = 6$). EMLA had a higher percentage of animals with analgesia but FII obtained duration of analgesia higher than the control. FII had the lowest duration and animals with analgesia. As expected, no signs of analgesic effects were observed in the animals treated with placebo films (data not shown).

4. Discussion

The activated charcoal is widely used in industrial processes for its ability to absorb a large number of substances, such as organic compounds, heavy metals, and colored substances, and be biocompatible and nontoxic [25]. The jambu's depigmented extract yield is not reported in the literature. Studies made of our research group showed that the removal of compounds in the ethanolic extract of jambu, in most the chlorophyll, increases espilantol percentage in relation to the

crude extract jambu even with reduced mass of the extract, since most of the components retained in the charcoal were pigments. Other authors have reported the effectiveness of activated charcoal in the removal of pigments, but none of jambu [21].

Macela's essential oil yield was below average described in literature, from 0.4 to 0.2%. This little yield could be justified by the harvesting period of the plant and type of soil used. It is known that the yield also varies according to the crop region [11].

Analysis by GC-MS showed that the compounds of interest, α -humulene and spilanthal, were present in jambu's extract and macela's essential oil, respectively, and also in the films.

The extract and the essential oil were incorporated into a film because they have some advantages over conventional dosage forms to avoid hepatic first-pass metabolism, improving the drug bioavailability and decreasing the dose frequency [26]. We used adjuvants to improve the properties of the films and to facilitate the solubilization of the extract and essential oil. Glycerin was used as a plasticizer; Tween 80 as emulsifier, and Transcutol as solubilizing/facilitating the penetration of active skin [27–29]. The polymer used was the HEC, by the aforementioned properties, for being compatible with the adjuvants, jambu's extract and macela's essential oil; it remained homogeneous after drying. Other polymers were tested in different concentrations, such as chitosan and polyvinyl alcohol. Also other ingredients like adjuvants were exhausted tested, but none of them remained homogeneous (data not shown).

To determine the physical properties of the films these were evaluated with respect to perforation, relaxation, and resilience. The mechanical properties of the films are mainly related with the polymer's ability to form bonds in polymer chains, making their separation difficult when subject to mechanical forces. The placebo film (FIII film) exhibited a higher resistance than the films with extract and essential oil; it presented higher values relative to perforation, resilience, and relaxation, as expected since there is no addition of extract and oil; consequently the film is more rigid. Hence, it may be concluded that the presence of jambu's extract and macela's essential oil improved their viscoelastic characteristics of deformation and molecular relaxation. Compared with another study of polyvinyl alcohol films, the films containing extract and essential oil are more malleable and easiest to cover the wound [20].

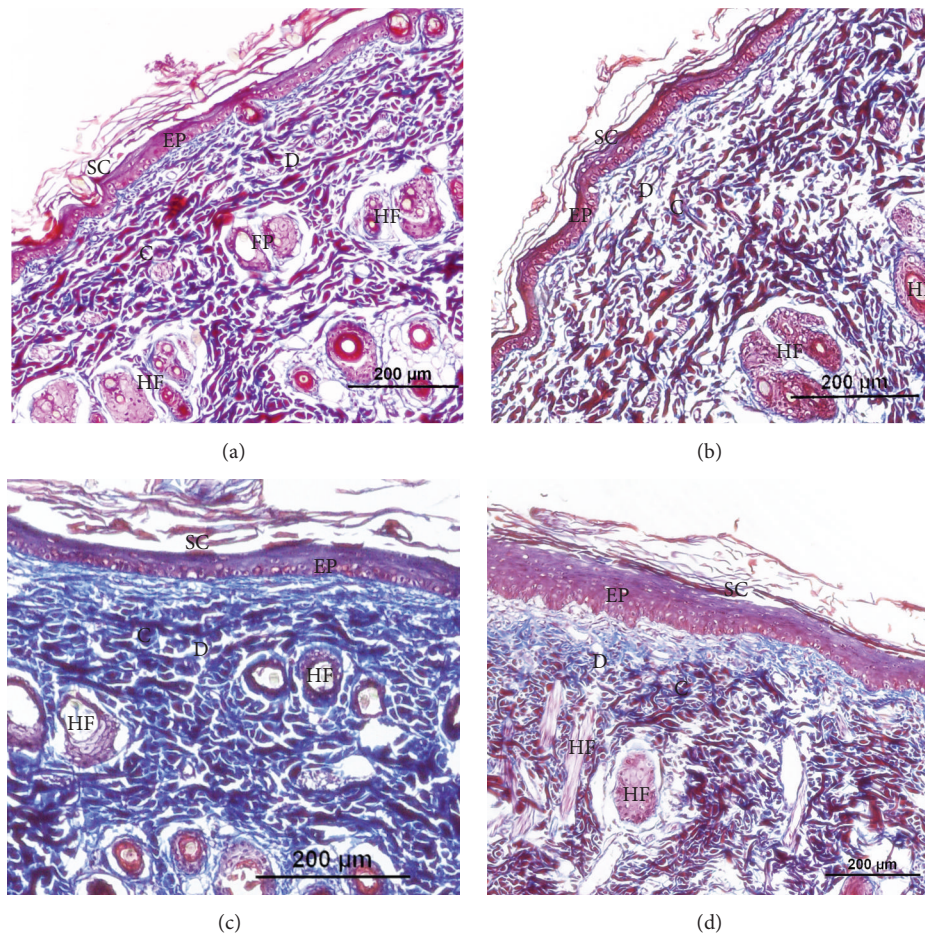


FIGURE 6: Histological sections from the wound area stained with Trichrome Masson. Slides were observed by optical microscopy at 200 μm . (a) Allantoin-positive control; (b) placebo film-negative control or FIII film; (c) FI film; (d) FII film. SC: stratum corneum; EP: epidermis; D: dermis; C: collagen; HF: hair follicle.

Wound healing is the process of repair following injury to the skin and other soft tissues. It is a complex and dynamic process of restoring cellular structures and tissue layers in damaged tissue as closely as possible to its normal and original state [30]. The formulations containing jambu's extract and macela's essential oil improved wound contraction and closure by the absorptive capacity of fluids. The formulation FII had the highest percentage of wound contraction and formulation FIII was better than the control, proving that the HEC is a great polymer for wound healing. Spilanthol and α -humulene already have anti-inflammatory action proven [31, 32] but their healing activity has not been studied. The histopathological analysis showed that, in just 10 days of treatment, the treatments with the FI and FII films were beneficial for the regeneration and reorganization of structures of the skin when compared with placebo film and allantoin; this is confirmed by the regular arrangement of collagen fibers and thickening epidermis in Figures 6 and 7. This result suggests that the jambu's extract and macela's essential oil helped in collagen deposition and decrease the time of the healing process. Moreover, it was not possible to

find any evidence of tissue damage, inflammation, or fibrosis in the rat skin.

In a study with another species but still natural product, the authors employed *Hibiscus rosa* extract in an ointment base and demonstrated that in 10 days the wound contracted about 75.0%, while the positive control, nitrofurazone ointment, contracted on average 45.0% [33]. One study from Asian medicine with ethanol extract and essential oil of *Murraya koenigii* proved that the administered essential oil helped with the wound contraction at 36.0%, the treatment with ethanol extract at 67.0%, and the ointment standard used at 37.0%, at the tenth day of treatment, but it was possible to observe the presence of collagen in the histological slides only on the 14th day [34]. These results demonstrate that the use of essential oils and extracts is important in wound healing; therapeutic and wound healing test corroborates this statement.

The antinociceptive activity was dose-dependent with only 5 min of application; formulation FII had a longer time of anesthesia than the EMLA cream, but formulation FI obtained a shorter time than EMLA. The topical EMLA cream

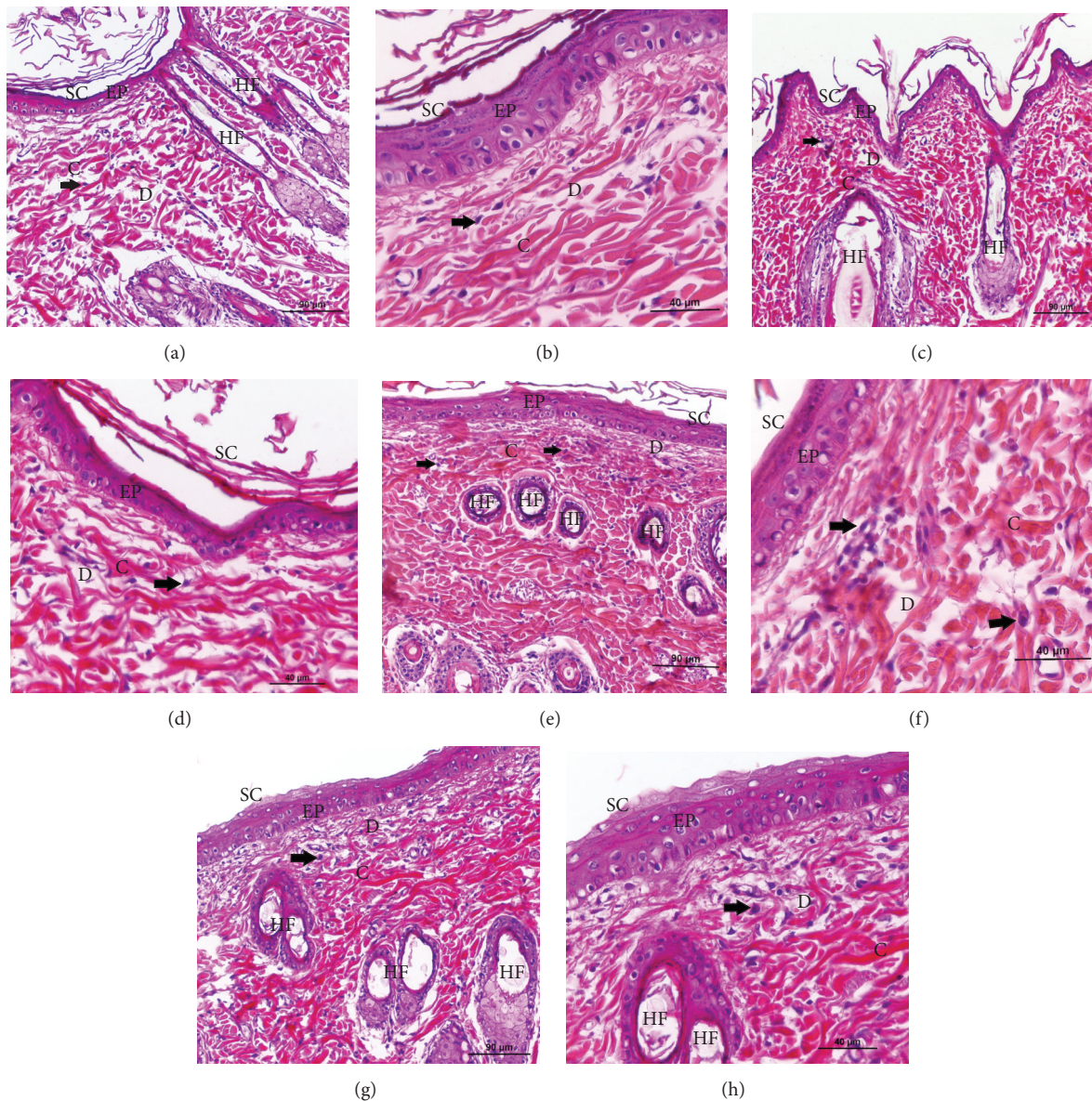


FIGURE 7: Histological sections from the wound area stained with Hematoxylin/Eosin. Slides were observed by optical microscopy at two different magnifications 90 and 40 μm . (a/b): allantoïn-positive control; (c/d): placebo film-negative control or FIII film; (e/f): FI film; (g/h): FII film. SC: stratum corneum; EP: epidermis; D: dermis; C: collagen; HF: hair follicle and the arrow indicate the fibroblast's core.

was chosen as a positive control because it is the topical anesthetic most used clinically and has an average duration of anesthesia 90 min after application [35].

Moreover, the antinociceptive activity of jambu's extract is due to the presence of spilanthol, an alkylamine in a high percentage in the extract. Other authors demonstrate the efficacy of jambu in antinociceptive test intraperitoneally [36]; this demonstrates the safety of jambu's extract.

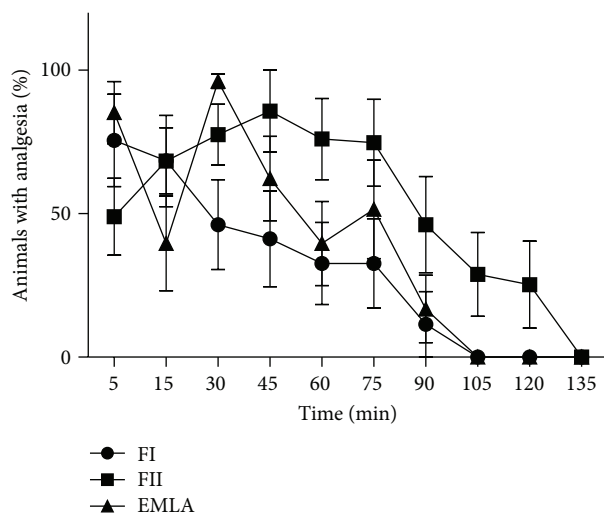
5. Conclusion

The FII film with 15.0% of jambu extract treated with activated charcoal and 1.5% macela's essential oil had the best results. The mechanical resistance tests displayed that

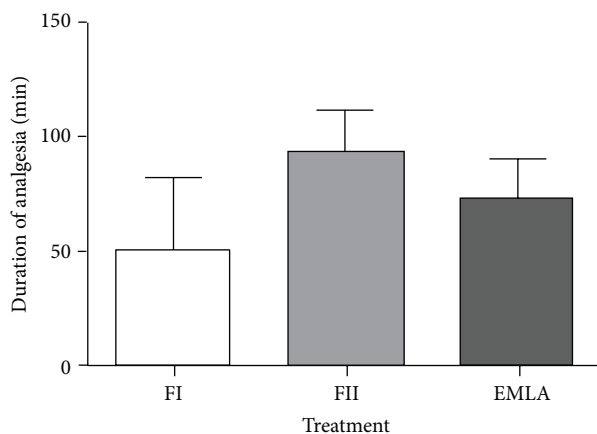
films with extract and essential oil are more malleable, making it easier to cover wounds when compared with other films, indicating that the films may be utilized in different locations of the human body with skin lesions. It had better healing activity and collagen deposition compared with the positive control, allantoïn. It also had the best result in the antinociceptive activity test compared with EMLA, a topical anesthetic most commonly used clinically. These results demonstrate the great potential of films as wound dressing.

Competing Interests

The authors declare that they have no competing interests.



(a)



(b)

FIGURE 8: Percent of animals with analgesia versus time (a) and duration of analgesia (b). FI: film with 10.0% of jambu extract and 1.0% of macela essential oil; FII: film with 15.0% of jambu extract and 1.5% of macela essential oil. There was no statistical significance between the groups.

Acknowledgments

The authors thank the São Paulo Research Foundation (FAPESP) for financial support (2016/13776-5).

References

- [1] S. Gustaitė, J. Kazlauskė, J. Bobokalonov et al., "Characterization of cellulose based sponges for wound dressings," *Colloids and Surfaces A: Physicochemical and Engineering Aspects*, vol. 480, pp. 336–342, 2015.
- [2] R. G. Pawar, S. D. Pawar, S. K. Banerjee, M. V. Gadhave, and D. D. Gaikwad, "Novel buccoadhesive polymers: a review," *Research Journal of Pharmacy and Technology*, vol. 5, no. 5, pp. 592–601, 2012.
- [3] M. N. El-Haddad, "Hydroxyethylcellulose used as an eco-friendly inhibitor for 1018c-steel corrosion in 3.5% NaCl solution," *Carbohydrate Polymers*, vol. 112, pp. 595–602, 2014.
- [4] P. Agrawal, S. Soni, G. Mittal, and A. Bhatnagar, "Role of polymeric biomaterials as wound healing agents," *The International Journal of Lower Extremity Wounds*, vol. 13, no. 3, pp. 180–190, 2014.
- [5] L. Chaushu, M. Weinreb, I. Beitlitum, O. Moses, and C. E. Nemcovsky, "Evaluation of a topical herbal patch for soft tissue wound healing: An Animal Study," *Journal of Clinical Periodontology*, vol. 42, no. 3, pp. 288–293, 2015.
- [6] R. Sinatra, "The fentanyl HCl Patient-Controlled Transdermal System (PCTS): an alternative to intravenous patient-controlled analgesia in the postoperative setting," *Clinical Pharmacokinetics*, vol. 44, no. 1, pp. 1–6, 2005.
- [7] F. Alessandri, D. Lijoi, E. Mistrangelo, A. Nicoletti, M. Crosa, and N. Ragni, "Topical diclofenac patch for postoperative wound pain in laparoscopic gynecologic surgery: a randomized study," *Journal of Minimally Invasive Gynecology*, vol. 13, no. 3, pp. 195–200, 2006.
- [8] I. B. Suffredini, H. S. Sader, A. G. Gonçalves et al., "Screening of antibacterial extracts from plants native to Brazilian Amazon Rain Forest and Atlantic Forest," *Brazilian Journal of Medical and Biological Research*, vol. 37, no. 3, pp. 379–384, 2004.
- [9] M. J. Ruffa, G. Ferraro, M. L. Wagner, M. L. Calcagno, R. H. Campos, and L. Cavallaro, "Cytotoxic effect of Argentine medicinal plant extracts on human hepatocellular carcinoma cell line," *Journal of Ethnopharmacology*, vol. 79, no. 3, pp. 335–339, 2002.
- [10] J. R. Santin, M. Lemos, L. C. K. Júnior, R. Niero, and S. F. de Andrade, "Antiulcer effects of *Achyrocline satureioides* (Lam.) DC (Asteraceae) (Marcela), a folk medicine plant, in different experimental models," *Journal of Ethnopharmacology*, vol. 130, no. 2, pp. 334–339, 2010.
- [11] D. Retta, E. Dellacassa, J. Villamil, S. A. Suárez, and A. L. Bandoni, "Marcela, a promising medicinal and aromatic plant from Latin America: a review," *Industrial Crops and Products*, vol. 38, no. 1, pp. 27–38, 2012.
- [12] E. S. Fernandes, G. F. Passos, R. Medeiros et al., "Anti-inflammatory effects of compounds alpha-humulene and (-)-trans-caryophyllene isolated from the essential oil of *Cordia verbenacea*," *European Journal of Pharmacology*, vol. 569, no. 3, pp. 228–236, 2007.
- [13] H. Lorenzi and F. J. A. Matos, *Plantas Mediciniais no Brasil: Nativas e Exóticas*, Instituto Plantarum de Estudos da Flora Ltda, Nova Odessa, Brazil, 2nd edition, 2008.
- [14] M. Singh and R. Chaturved, "Screening and quantification of an antiseptic alkylamide, spilanthol from in vitro cell and tissue cultures of *Spilanthes acmella* Murr," *Industrial Crops and Products*, vol. 36, no. 1, pp. 321–328, 2012.
- [15] C. P. Soares, V. R. Lemos, A. G. da Silva et al., "Effect of *Spilanthes acmella* hydroethanolic extract activity on tumour cell actin cytoskeleton," *Cell Biology International*, vol. 38, no. 1, pp. 131–135, 2014.
- [16] R. D. Hiserodt, B. M. Pope, M. Cossette, and M. L. Dewis, "Proposed mechanisms for the fragmentation of doubly allylic alkenamides (tingle compounds) by low energy collisional activation in a triple quadrupole mass spectrometer," *Journal of*

- the American Society for Mass Spectrometry*, vol. 15, no. 10, pp. 1462–1470, 2004.
- [17] S. Prachayasittikul, V. Prachayasittikul, S. Ruchirawat, and V. Prachayasittikul, “High therapeutic potential of *Spilanthes acmella*: a review,” *EXCLI Journal*, vol. 12, pp. 291–312, 2013.
- [18] A. D. Widgerow and S. Kalaria, “Pain mediators and wound healing—establishing the connection,” *Burns*, vol. 38, no. 7, pp. 951–959, 2012.
- [19] M. R. Rang and M. M. Dale, *Rang & Dale Farmacologia*, Elsevier, Rio de Janeiro, Brazil, 7th edition, 2012.
- [20] M. J. González and J. M. Marioli, “Antibacterial activity of water extracts and essential oils of various aromatic plants against *Paenibacillus larvae*, the causative agent of American Foulbrood,” *Journal of Invertebrate Pathology*, vol. 104, no. 3, pp. 209–213, 2010.
- [21] V. S. Freitas, *Desenvolvimento e avaliação da eficiência de um bioadesivo contendo extrato de Spilanthes acmella L. Murray para administração oral como anestésico tópic [M.S. thesis]*, State University of Campinas, São Paulo, Brazil, 2014.
- [22] K. S. P. Jodar, V. M. Balcão, M. V. Chaud et al., “Development and characterization of a hydrogel containing silver sulfadiazine for antimicrobial topical applications,” *Journal of Pharmaceutical Sciences*, vol. 104, no. 7, pp. 2241–2254, 2015.
- [23] M. P. Jorge, C. Madjarof, A. L. T. G. Ruiz et al., “Evaluation of wound healing properties of *Arrabidaea chica* Verlot extract,” *Journal of Ethnopharmacology*, vol. 118, no. 3, pp. 361–366, 2008.
- [24] D. R. de Araujo, C. Padula, C. M. S. Cereda et al., “Bioadhesive films containing benzocaine: correlation between in vitro permeation and in vivo local anesthetic effect,” *Pharmaceutical Research*, vol. 27, no. 8, pp. 1677–1686, 2010.
- [25] R. Devesa-Rey, G. Bustos, J. M. Cruz, and A. B. Moldes, “Optimisation of entrapped activated carbon conditions to remove coloured compounds from winery wastewaters,” *Bioresource Technology*, vol. 102, no. 11, pp. 6437–6442, 2011.
- [26] R. Guo, X. Du, R. Zhang, L. Deng, A. Dong, and J. Zhang, “Bioadhesive film formed from a novel organic-inorganic hybrid gel for transdermal drug delivery system,” *European Journal of Pharmaceutics and Biopharmaceutics*, vol. 79, no. 3, pp. 574–583, 2011.
- [27] M. Guo, T. Z. Jin, M. P. Yadav, and R. Yang, “Antimicrobial property and microstructure of micro-emulsion edible composite films against *Listeria*,” *International Journal of Food Microbiology*, vol. 208, pp. 58–64, 2015.
- [28] M. Kouchak, A. Ameri, B. Naseri, and S. Kargar Boldaji, “Chitosan and polyvinyl alcohol composite films containing nitrofurazone: preparation and evaluation,” *Iranian Journal of Basic Medical Sciences*, vol. 17, no. 1, pp. 14–20, 2014.
- [29] D. W. Sullivan Jr., S. C. Gad, and M. Julien, “A review of the nonclinical safety of Transcutol, a highly purified form of diethylene glycol monoethyl ether (DEGEE) used as a pharmaceutical excipient,” *Food and Chemical Toxicology*, vol. 72, pp. 40–50, 2014.
- [30] R. A. F. Clark, “Cutaneous tissue repair: basic biologic considerations I,” *Journal of the American Academy of Dermatology*, vol. 13, no. 5, pp. 701–725, 1985.
- [31] E. S. Fernandes, G. F. Passos, R. Medeiros et al., “Anti-inflammatory effects of compounds alpha-humulene and (–)-trans-caryophyllene isolated from the essential oil of *Cordia verbenacea*,” *European Journal of Pharmacology*, vol. 569, no. 3, pp. 228–236, 2007.
- [32] A. Chakraborty, R. K. B. Devi, S. Rita, K. Sharatchandra, and T. I. Singh, “Preliminary studies on antiinflammatory and analgesic activities of *Spilanthes acmella* in experimental animal models,” *Indian Journal of Pharmacology*, vol. 36, no. 3, pp. 148–150, 2004.
- [33] A. Bhaskar and V. Nithya, “Evaluation of the wound-healing activity of *Hibiscus rosa sinensis* L (Malvaceae) in Wistar albino rats,” *Indian Journal of Pharmacology*, vol. 44, no. 6, pp. 694–698, 2012.
- [34] T. Nagappan, T. C. Segaran, M. E. A. Wahid, P. Ramasamy, and C. S. Vairappan, “Efficacy of carbazole alkaloids, essential oil and extract of *murraya koenigii* in enhancing subcutaneous wound healing in rats,” *Molecules*, vol. 17, no. 12, pp. 14449–14463, 2012.
- [35] P. M. Friedman, E. A. Mafong, E. S. Friedman, and R. G. Geronemus, “Topical anesthetics update: EMLA and beyond,” *Dermatologic Surgery*, vol. 27, no. 12, pp. 1019–1026, 2001.
- [36] R. C. O. Nomura, M. R. A. Rodrigues, C. F. Da Silva et al., “Antinociceptive effects of ethanolic extract from the flowers of *Acemella oleracea* (L.) R.K. Jansen in mice,” *Journal of Ethnopharmacology*, vol. 150, no. 2, pp. 583–589, 2013.



Hindawi
Submit your manuscripts at
<http://www.hindawi.com>

