

UNIVERSIDADE ESTADUAL DE CAMPINAS  
SISTEMA DE BIBLIOTECAS DA UNICAMP  
REPOSITÓRIO DA PRODUÇÃO CIENTÍFICA E INTELECTUAL DA UNICAMP

**Versão do arquivo anexado / Version of attached file:**

Versão do Editor / Published Version

**Mais informações no site da editora / Further information on publisher's website:**

<https://journals.plos.org/plosone/article?id=10.1371/journal.pone.0181585>

**DOI: 10.1371/journal.pone.0181585**

**Direitos autorais / Publisher's copyright statement:**

©2017.0 by Public Library of Science. All rights reserved.

DIRETORIA DE TRATAMENTO DA INFORMAÇÃO

Cidade Universitária Zeferino Vaz Barão Geraldo

CEP 13083-970 – Campinas SP

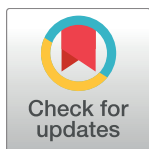
Fone: (19) 3521-6493

<http://www.repositorio.unicamp.br>

RESEARCH ARTICLE

# Progress towards a public chemogenomic set for protein kinases and a call for contributions

David H. Drewry<sup>1\*</sup>, Carrow I. Wells<sup>1</sup>, David M. Andrews<sup>2</sup>, Richard Angell<sup>3</sup>, Hassan Al-Ali<sup>4,5</sup>, Alison D. Axtman<sup>1</sup>, Stephen J. Capuzzi<sup>6</sup>, Jonathan M. Elkins<sup>7</sup>, Peter Ettmayer<sup>8</sup>, Mathias Frederiksen<sup>9</sup>, Opher Gileadi<sup>10</sup>, Nathanael Gray<sup>11,12</sup>, Alice Hooper<sup>3</sup>, Stefan Knapp<sup>13</sup>, Stefan Laufer<sup>14</sup>, Ulrich Luecking<sup>15</sup>, Michael Michaelides<sup>16</sup>, Susanne Müller<sup>13</sup>, Eugene Muratov<sup>6</sup>, R. Aldrin Denny<sup>17</sup>, Kumar S. Saikatendu<sup>18</sup>, Daniel K. Treiber<sup>19</sup>, William J. Zuercher<sup>1</sup>, Timothy M. Willson<sup>1</sup>



## OPEN ACCESS

**Citation:** Drewry DH, Wells CI, Andrews DM, Angell R, Al-Ali H, Axtman AD, et al. (2017) Progress towards a public chemogenomic set for protein kinases and a call for contributions. PLoS ONE 12(8): e0181585. <https://doi.org/10.1371/journal.pone.0181585>

**Editor:** Anette Duensing, University of Pittsburgh Cancer Institute, UNITED STATES

**Received:** March 31, 2017

**Accepted:** July 3, 2017

**Published:** August 2, 2017

**Copyright:** © 2017 Drewry et al. This is an open access article distributed under the terms of the [Creative Commons Attribution License](https://creativecommons.org/licenses/by/4.0/), which permits unrestricted use, distribution, and reproduction in any medium, provided the original author and source are credited.

**Data Availability Statement:** All relevant data are within the paper and its supporting information files.

**Funding:** Our work was funded by the Eshelman Institute for Innovation (<http://unciei.org/>). The funder (Eshelman Institute for Innovation) provided support in the form of salaries for authors (DHD, CIW, ADA, WJZ, TMW), but did not play a role in the study design, data collection and analysis, decision to publish, or preparation of the manuscript. The specific roles of all authors are

**1** Structural Genomics Consortium, UNC Eshelman School of Pharmacy, University of North Carolina at Chapel Hill, Chapel Hill, North Carolina, United States of America, **2** AstraZeneca, Darwin Building, Cambridge Science Park, Cambridge, United Kingdom, **3** Drug Discovery Group, Translational Research Office, University College London School of Pharmacy, 29–39 Brunswick Square, London, United Kingdom, **4** Miami Project to Cure Paralysis, University of Miami Miller School of Medicine, Miami, Florida, United States of America, **5** Peggy and Harold Katz Family Drug Discovery Center, University of Miami Miller School of Medicine, Miami, Florida, United States of America, **6** Laboratory for Molecular Modeling, Division of Chemical Biology and Medicinal Chemistry, UNC Eshelman School of Pharmacy, University of North Carolina at Chapel Hill, Chapel Hill, North Carolina, United States of America, **7** Structural Genomics Consortium, Universidade Estadual de Campinas—UNICAMP, Campinas, Sao Paulo, Brazil, **8** Boehringer Ingelheim RCV GmbH & Co KG, Vienna, Austria, **9** Novartis Institutes for BioMedical Research, Novartis Campus, Basel, Switzerland, **10** Structural Genomics Consortium and Target Discovery Institute, Nuffield Department of Clinical Medicine, University of Oxford, Oxford, United Kingdom, **11** Harvard Department of Biological Chemistry and Molecular Pharmacology, Harvard Medical School, Boston, Massachusetts, United States of America, **12** Department of Cancer Biology, Dana–Farber Cancer Institute, Boston, Massachusetts, United States of America, **13** Structural Genomics Consortium, Buchmann Institute for Molecular Life Sciences, and Institute of Pharmaceutical Chemistry, Goethe University Frankfurt, Max-von-Laue-Straße 15, Frankfurt am Main, Germany, **14** Department of Pharmaceutical Chemistry, Institute of Pharmaceutical Sciences, Eberhard Karls Universität Tübingen, Auf der Morgenstelle 8, Tübingen, Germany, **15** Bayer Pharma AG, Drug Discovery, Müllerstrasse 178, Berlin, Germany, **16** Oncology Chemistry, AbbVie, 1 North Waukegan Road, North Chicago, Illinois, United States of America, **17** Worldwide Medicinal Chemistry, Pfizer Inc., Cambridge, Massachusetts, United States of America, **18** Global Research Externalization, Takeda California, Inc., 10410 Science Center Drive, San Diego, California, United States of America, **19** DiscoverX Corporation, Fremont, California, United States of America

\* [David.Drewry@unc.edu](mailto:David.Drewry@unc.edu)

## Abstract

Protein kinases are highly tractable targets for drug discovery. However, the biological function and therapeutic potential of the majority of the 500+ human protein kinases remains unknown. We have developed physical and virtual collections of small molecule inhibitors, which we call chemogenomic sets, that are designed to inhibit the catalytic function of almost half the human protein kinases. In this manuscript we share our progress towards generation of a comprehensive kinase chemogenomic set (KCGS), release kinome profiling data of a large inhibitor set (Published Kinase Inhibitor Set 2 (PKIS2)), and outline a process through which the community can openly collaborate to create a KCGS that probes the full complement of human protein kinases.

articulated in the author contributions section.

David M. Andrews is an employee of the commercial company AstraZeneca. AstraZeneca did not play a role in the study design, data collection and analysis, decision to publish, or preparation of the manuscript, and only provided financial support in the form of author salary. Peter Ettmayer is an employee of the commercial company Boehringer Ingelheim. Boehringer Ingelheim did not play a role in the study design, data collection and analysis, decision to publish, or preparation of the manuscript, and only provided financial support in the form of author salary. Mathias Frederiksen is an employee of the commercial company Novartis Institute for Biomedical Research. Novartis Institute for Biomedical Research did not play a role in the study design, data collection and analysis, decision to publish, or preparation of the manuscript, and only provided financial support in the form of author salary. Ulrich Luecking is an employee of the commercial company Bayer Pharma. Bayer Pharma did not play a role in the study design, data collection and analysis, decision to publish, or preparation of the manuscript, and only provided financial support in the form of author salary. Michael Michaelides is an employee of the commercial company AbbVie. AbbVie did not play a role in the study design, data collection and analysis, decision to publish, or preparation of the manuscript, and only provided financial support in the form of author salary. R. Aldrin Denny is an employee of the commercial company Pfizer Inc. Pfizer Inc did not play a role in the study design, data collection and analysis, decision to publish, or preparation of the manuscript, and only provided financial support in the form of author salary and research materials. Kumar Saikatendu is an employee of the commercial company Takeda California, Inc. Takeda California Inc did not play a role in the study design, data collection and analysis, decision to publish, or preparation of the manuscript, and only provided financial support in the form of author salary and research materials. Dan Treiber is an employee of the commercial company DiscoverX Corporation. DiscoverX Corporation did not play a role in the study design, data collection and analysis, decision to publish, or preparation of the manuscript, and only provided financial support in the form of author salary.

**Competing interests:** David M. Andrews is an employee of the commercial company AstraZeneca. Peter Ettmayer is an employee of the commercial company Boehringer Ingelheim. Mathias Frederiksen is an employee of the commercial company Novartis Institute for Biomedical Research. Ulrich Luecking is an

## Kinases: Important targets, untapped opportunities

Protein kinases are a large family of enzymes that catalyze the transfer of phosphate from ATP to serine, threonine, and tyrosine residues of their substrate proteins. Protein kinases are found in all eukaryotes from yeast to mammals. Humans express 518 protein kinase catalytic domains using the Manning classification.[1] The precise number, however, is a matter of debate, since a number of the proteins are pseudokinases that lack catalytic activity, some have been re-characterized as members of other protein families (e.g. bromodomains) and some are enzymes for non-protein substrates.

Over the course of 20 years of experimentation medicinal chemists have become adept at synthesizing cell-active kinase inhibitors that target the ATP binding site in the catalytic domain of these enzymes.[2–4] Coupled with the discovery that protein kinases are involved in almost every aspect of cell signaling and are often dysregulated in human diseases, these enzymes have become popular targets for development of drugs. Academic, biotech, and large pharmaceutical company labs alike have pursued kinase inhibition creatively and diligently. These efforts have borne fruit, and the FDA has approved over 35 small molecule kinase inhibitor medicines since the turn of century. Accordingly, protein kinases have proven to be among the most productive of human gene families for development of targeted therapeutics.[5, 6]

Despite the success of protein kinase drug discovery within the pharmaceutical industry, much of their therapeutic potential remains untapped. An analysis of peer-reviewed publications and published patent applications in 2010 revealed that 80% of the protein kinases remained poorly studied and their roles in human biology were largely undefined.[7] Moreover, the vast majority of kinase medicinal chemistry and experimental data remains firewalled within company databases or held as proprietary know-how, which means the broader scientific community has limited access to this body of knowledge. We anticipate that a wide range of human diseases will be amenable to treatment with inhibitors of the currently untargeted protein kinases and that if a high quality set of tool molecules for all protein kinases were freely available, it would enable their role in cell signaling to be better understood.[8] Building this detailed understanding of kinase roles on a genomic scale together as a community will contribute to the validation of useful kinase targets across the kinome. These identified targets can then be considered for the aggressive pursuit, commitment, and action required to bring new medicines to patients.

One way to understand the role of a particular kinase is to utilize a chemical probe for the kinase of interest. Small molecule chemical probes that meet stringent criteria for potency and selectivity are powerful tools to study the biology of their target proteins in cells.[9] Several investigators have successfully identified chemical probes for historically understudied protein kinases. These probes proved useful to understand the role of the specifically targeted kinase in disease biology. For example, synthesis of a chemical probe for BRAF facilitated the study of its role in tumorigenesis and eventually led to the development of several anti-cancer drugs. [10] Likewise, chemical probes for the poorly studied kinases such as ZAK[11], STK16[12], PLK4[13], and STK33[14] have advanced research in oncology and other diseases. However, although these probes proved extremely useful, each report also highlights the challenges in identification of highly selective ATP-competitive inhibitors, which can be resource intensive given the large number of kinases in the protein family.

Building a set of over 500 highly selective kinase chemical probes will take many, many years of concerted effort. In addition, the community does not know how to prioritize the development of individual chemical probes. In what order should we address the remaining kinome so that we find the best targets first? Is there another, more efficient way to identify kinase targets that are worth pursuing in more depth?

employee of the commercial company Bayer Pharma. Michael Michaelides is an employee of the commercial company AbbVie. R. Aldrin Denny is an employee of the commercial company Pfizer Inc. Kumar Saikatendu is an employee of the commercial company Takeda California, Inc. Dan Treiber is an employee of the commercial company DiscoverX Corporation. These commercial affiliations do not alter our adherence to all PLOS ONE policies on sharing data and materials.

## Kinase chemogenomics

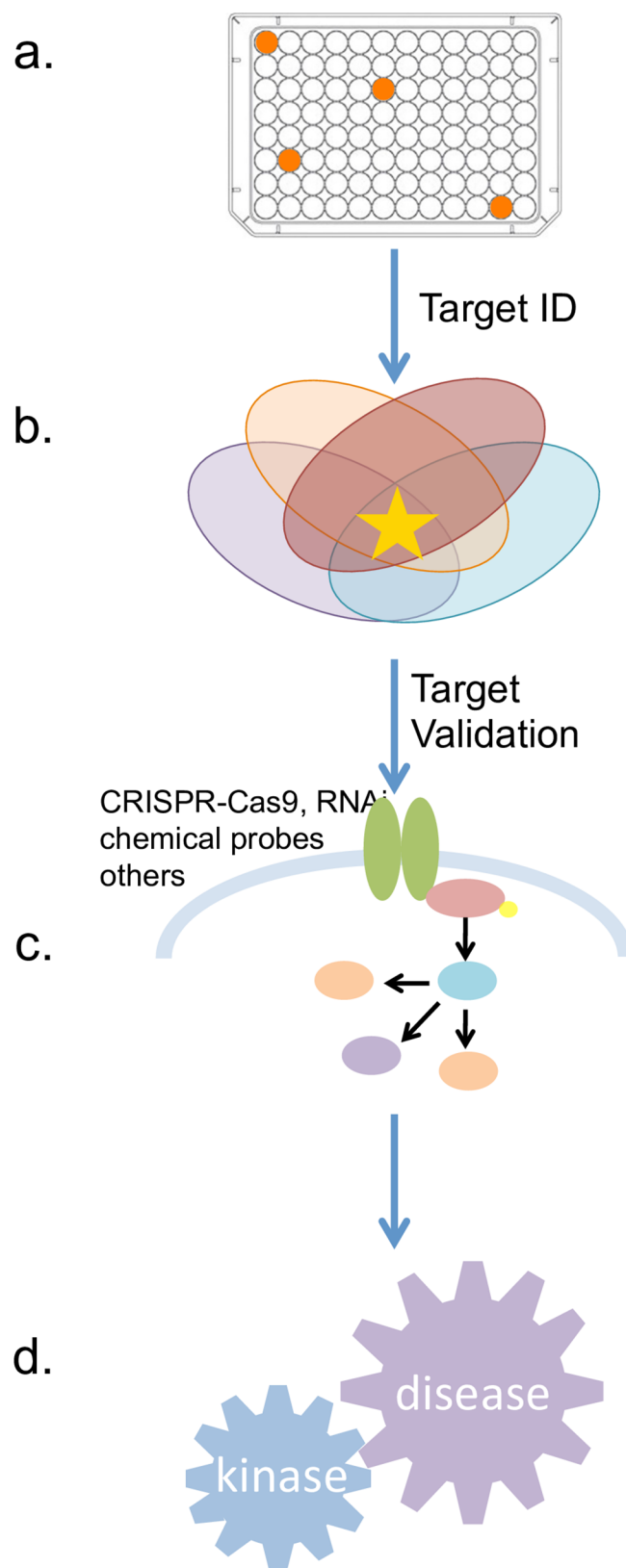
To expedite kinome-wide target discovery, we have begun construction of a comprehensive kinase chemogenomic set (KCGS). This practical solution takes advantage of the chemical connectivity of kinases (cross reactivity of inhibitors), the large numbers of kinase inhibitors already made by labs around the world (and thus volume of data available), and the ability to screen practically kinome wide. We call the methodology “kinase chemogenomics” since it seeks to use a set of small molecule kinase inhibitors to interrogate the biology of all kinase gene products in cells. Bunnage and Jones recently reviewed the concept and utility of chemogenomic libraries.[15] They describe a chemogenomic set as a collection of small molecules with defined (annotated) and narrow activity. A hit from the testing of such a library in a phenotypic screen implies that the annotated targets of that hit are involved in modulation of the measured phenotype. Our KCGS is being constructed with this exact goal in mind: hits from the set will point to potential targets driving phenotypic responses in disease relevant phenotypic assays. These targets then are candidates for follow up experiments such as target knockdown with CRISPR-Cas9 or RNAi, or chemical probe development (Fig 1). These more pointed biological studies can add further support to the utility of the identified targets. The successful interplay between annotated compound sets, phenotypic screening, genetic methods, and bioinformatics is well documented, and integration leads to new insights on targets and pathways of interest.[16–23] Herein we describe our progress towards the generation of a publicly available KCGS, and outline a collaborative plan to complete the set. This collaborative project between industrial and academic scientists will build a comprehensive KCGS composed only of potent, narrow spectrum inhibitors that collectively demonstrate full coverage of all human protein kinases for which there are assays available at one of the contract research organizations that offers broad kinome profiling (“the screenable kinome”). A publicly available comprehensive KCGS will accelerate basic research into the biological function and therapeutic potential of hundreds of understudied protein kinases.

## The Published Kinase Inhibitor Set (PKIS): KCGS proof of concept experiments

We released our first kinase chemogenomic set, the Published Kinase Inhibitor Set (PKIS[24]), to catalyze new academic research on understudied kinases by provision of physical samples of a large set of kinase inhibitors, along with the annotation detailing kinase inhibitory profiles. PKIS is a collection of 367 ATP-competitive kinase inhibitors representing 31 diverse chemotypes.[25] Design of the set capitalized on the fact that ATP-competitive inhibitors often demonstrate activity across multiple kinases. The inhibitors were chosen from molecules that had been previously published by medicinal chemists at GlaxoSmithKline, but had only been screened against a limited number of kinases. Screening of PKIS across 232 protein kinases identified potent inhibitors of kinase targets across the kinome, and showed that this set is made up of compounds with a range of selectivity profiles. The chemical structures of the inhibitors and their associated kinase screening data were placed in the public domain (<https://www.ebi.ac.uk/chembl/db/extra/PKIS/>) and the set was made widely available to the research community. Using a web-based request mechanism (<https://pharmacy.unc.edu/research/sgc-unc/request-pkis/>) a physical copy of PKIS was distributed to over 200 academic investigators to support their research.

Sharing the PKIS compounds openly allowed investigators across the scientific community to query the impact of kinase inhibition in diverse biological contexts. For example, PKIS was used to identify potential medicinal chemistry starting points and generate ligand bound crystal structures for the understudied GRK family kinases.[26] The GRKs have been implicated in





**Fig 1. Schematic: Utilization of the KCGS.** (a) Disease relevant phenotypic screen highlights active compounds (b) Because all the targets are annotated, active molecules points to potential targets of interest.

(c) Follow up experiments can be used to help confirm importance of these highlighted targets (d) Body of evidence implicates kinases that can be inhibited to impact disease.

<https://doi.org/10.1371/journal.pone.0181585.g001>

heart failure[27], Parkinson's disease[28], and multiple myeloma[29]. A PKIS compound was identified as a potent ligand for the pseudokinase MLKL, and the authors demonstrated that binding to this pseudokinase inhibited necroptosis.[30] Fifty-three PKIS compounds were identified with sub-micromolar potency against *T. brucei*, the protozoan pathogen that causes human African trypanosomiasis, a devastating disease in the developing world.[31] PKIS was used in a high content screen investigating axon growth in primary CNS neurons.[32] The team was able to use the broad inhibitor annotation and phenotypic readouts to develop a semi-empirical, machine learning algorithm that allowed for generation of testable hypotheses as to patterns of kinase inhibition that led to neurite outgrowth. Screening of PKIS in a number of chordoma cell lines identified several different EGFR inhibitors with activity.[33] Chordoma is a rare bone cancer, and no targeted therapies have been approved for use in chordoma patients. Identification of a well-studied kinase such as EGFR with drugs on the market and a number of compounds advancing in the clinic for other cancer indications, allows for potential repurposing, a faster way to approval. These and other examples[34–44] of PKIS applications demonstrate the utility of sharing an annotated kinase inhibitor set and convinced us to proceed with the construction of a comprehensive KCGS—one that provides coverage of the currently screenable kinome.

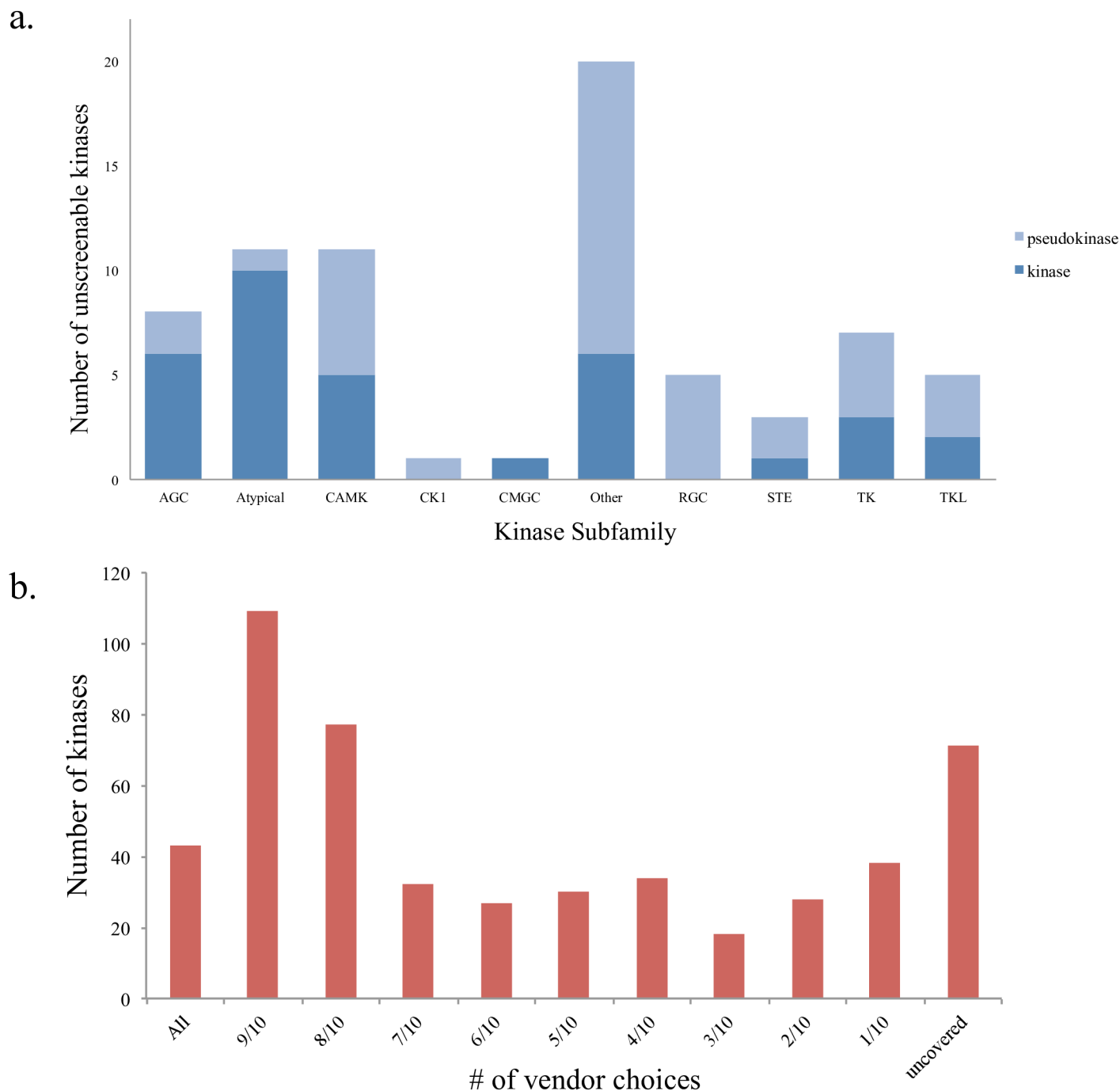
## The screenable human kinome

As an important step in building a comprehensive KCGS we sought to define the readily screenable human kinome—those protein kinases for which a robust assay is available through a commercial vendor. We only counted assays for wild type human protein kinases and excluded assays for mutant protein kinases, lipid kinases and sugar kinases (Table in S1 Table). The ten commercial vendors surveyed were Carina Biosciences, DiscoverX, Eurofins, Luceome, MRC PPU, Nanosyn, ProQinase, Reaction Biology Corp., SignalChem and ThermoFisher. The commercial protein kinase assays are run in multiple formats, but all have been widely used by the kinase research community to measure kinase inhibitor activity and selectivity across a wide range of human kinases.[45] Of the total kinome, we identified 436 kinases for which there were commercially available assays. Many of the kinases for which no assay was available have been classified as pseudokinases[46] (Fig 2A). Of course, the absence of a contract research organization assay for a particular kinase does not mean that the kinase in question is not assayable, and in fact there are assays for some pseudokinases. Non-overlapping assays from only two vendors (Fig 2B) provides efficient profiling of the candidate inhibitors against 97% of the screenable human kinome. Importantly, for more than half of the screenable kinome (260 kinases), one can choose from up to seven different vendors, and this offers flexibility in terms of assay format, custom panel options, data visualization tools, and practical considerations such as turnaround time and pricing structure.

## Progress towards a comprehensive KCGS

Our ideal KCGS will contain 1000–1500 compounds. This number of compounds is on the order of what many disease relevant phenotypic screens can handle efficiently. In addition, we conducted a simulation (see methods section for further detail) to estimate the theoretical number of compounds required to achieve kinome coverage under the selectivity criteria set forth herein. The simulation suggested that on the order of 570 compounds was sufficient to

achieve a set with all the desired attributes. Thus 1000–1500 compounds well-selected compounds can meet our goal of full kinome coverage and will be able to provide at least two to four distinct chemotypes (structural classes) inhibiting each kinase.



**Fig 2. The screenable protein kinome.** Using assays from 10 vendors a total of 436 unique non-mutant human protein kinases can be readily screened. (a) Subfamily representation of the protein kinases that were not available through the 10 vendors. Nearly half of the unscreenable human kinome is composed of pseudokinases (b) Histogram illustrating how many vendors can be used to screen across the kinome. For example, there are 43 kinases that all 10 vendors have screens for (“all” bar). There are another 109 kinases screened by 9 out of 10 vendors (“9/10” bar). There are 38 kinases that only 1 out of the 10 vendors has assays for (“1/10” bar). *Note: Our definition of the “screenable kinome” is those kinases for which there is a commercial assay that can be accessed. It is likely that assays could indeed be configured for many of the kinases not currently on this list.*

<https://doi.org/10.1371/journal.pone.0181585.g002>

In kinase medicinal chemistry, different chemotypes that target the same kinase often have different off-target kinase profiles. When two or more chemotypes that inhibit a given kinase are active in a phenotypic screen, one gains confidence that the phenotypic activity is linked to that target kinase. Ideally, the compounds included in the KCGS will potently inhibit at least one kinase with an  $IC_{50}$  value less than 100 nM, and each compound in the set will have potent activity on less than 4% of the kinome. We will avoid inclusion of even moderately promiscuous compounds (inhibiting >10% of the screenable kinome). Promiscuous compounds do not aid in the deconvolution (target identification) of phenotypic screening results. Experimental results from a set of narrow spectrum kinase inhibitors, however, can help scientists focus on the kinase or sets of kinases that are driving the phenotypic response of interest. The comprehensive KCGS will be built from PKIS compounds, PKIS2 compounds (described below), appropriate literature compounds, and donations from consortium members. In the following section we describe each of these pieces in turn. It is important to note that the compounds in KCGS may or may not be suitable for *in vivo* use. *In vivo* activity is not a component of the design criteria. Many of the compounds that end up in KCGS will have been published previously, so some details on solubility, metabolism, or other properties relevant for *in vivo* experiments may be available for some set members.

**PKIS compounds suitable for inclusion:** As mentioned above, PKIS was developed as a first generation, proof-of-concept KCGS. PKIS compounds have a range of selectivity profiles, with some members of the set being broad spectrum, thus too promiscuous for inclusion in our KCGS. Because of this, we have defined criteria for a narrow spectrum inhibitor to be suitable as a member of the comprehensive KCGS ([Box 1](#), and more detail in the methods section).

### Box 1. Criteria for kinase chemogenomic set inclusion.

#### PKIS:

Potency: At least 1 kinase inhibited >90% Inhibition and one of these selectivity criteria must also be met:

GINI: > 0.75

Entropy: < 1.65

Selectivity index:  $SI(90) < 0.02$

\* If only GINI is met then the inhibitor must not inhibit more than 7 kinases above 90%I for KCGS set inclusion

#### PKIS2:

Potency—At least 1 kinase with  $K_d < 100\text{nM}$

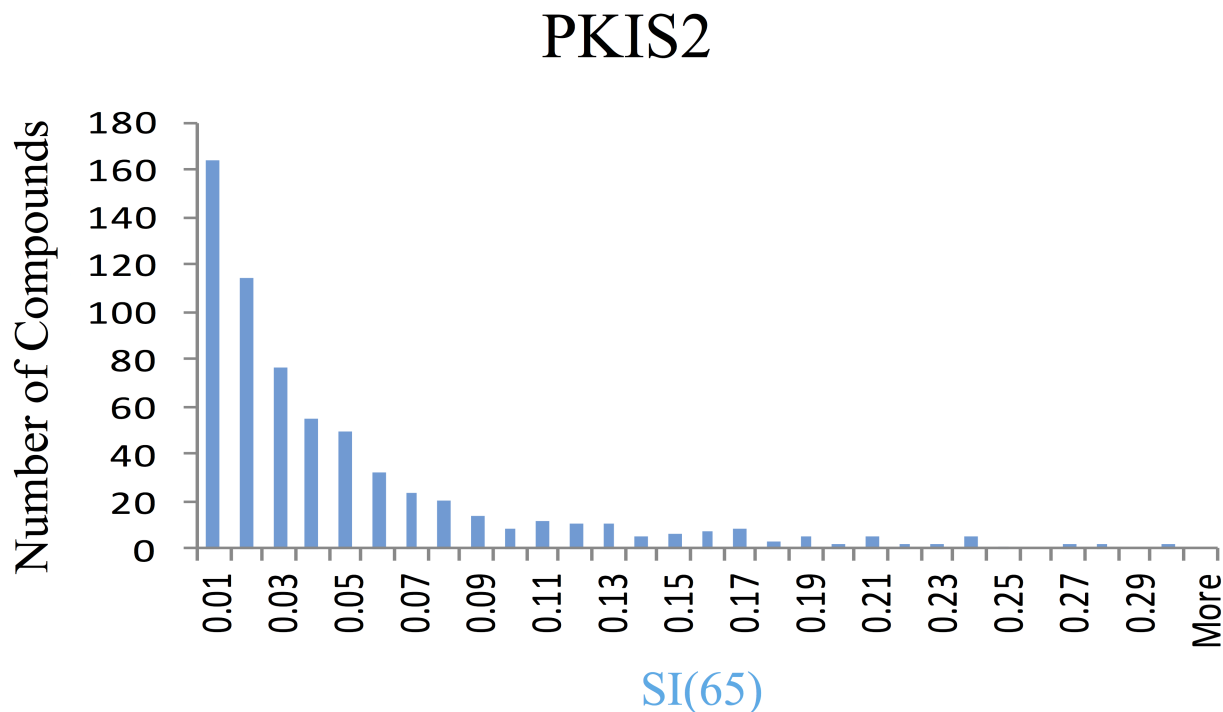
Selectivity index— $SI(65) < 0.04$

Based on current data, 131 compounds from PKIS have useful potency and narrow spectrum inhibition profiles, and these compounds represent 22 different chemotypes and cover a total of 58 kinases (Table in [S2 Table](#)).

**PKIS2 compounds suitable for inclusion:** Building on the success of PKIS, we assembled a second kinase chemogenomic set (PKIS2), composed of 645 small molecule inhibitors representing 86 diverse chemotypes that were published by medicinal chemists at GlaxoSmithKline, Pfizer, and Takeda. PKIS and PKIS2 have only nine chemotypes in common. The PKIS2 compounds that are members of these nine chemotypes are not duplicates of PKIS compounds, but rather expand on the structural variety within the chemotype. Herein we report the composition of PKIS2 and broad kinome screening data for these compounds. We profiled PKIS2

in singlicate at a concentration of 1  $\mu\text{M}$  against a broad panel of 392 wild-type human kinases using competitive displacement of diverse immobilized inhibitors as a measure of the activity of a compound on each specific kinase.[47] The resulting kinome-wide profiling data showed tight distribution of highly selective compounds (Fig 3). 357 compounds that demonstrated significant activity on <4% of human wild type kinases were selected for confirmatory  $K_d$  determinations on 339 kinases. Specifically, we generated  $K_d$  values for all compounds with Selectivity Index (SI(65)) < 0.04 against those kinases that showed >80% I. The selectivity index is a measurement that represents the fraction of kinases inhibited above 65% inhibition at a 1 $\mu\text{M}$  screening concentration. This fraction can range from zero for a compound that inhibits none of the kinases tested at the chosen threshold to one for a compound that inhibits all of the kinases tested above the chosen threshold. We chose 0.04 (representing inhibition of only 4% of the kinases screened) as our selectivity threshold in order to ensure only narrow spectrum inhibitors were identified. This threshold could be gradually increased to identify more compounds that may be suitable for the KCGS, but as the threshold goes up the number of kinases targeted by the inhibitor will rise. The  $K_d$  values that were determined based on this threshold of 0.04 can be found in S3 Table. The high confirmation rate of the  $K_d$  determinations demonstrated that the initial broad kinase screen had <0.5% false positive rate despite being run in singlicate.

In addition, 90% of the confirmed actives demonstrated a  $K_d$  < 1  $\mu\text{M}$  at one or more kinases. All chemical structures and wild type kinase profiling data are available in S4 Table. Applying our potency and selectivity criteria for inclusion in the comprehensive KCGS, 174 PKIS2 compounds (S5 Table) from 23 chemotypes have narrow spectrum activity on 81 kinases.



**Fig 3. Selectivity profile of PKIS2 compounds using DiscoverX KINOMEScan.** Selectivity Index analysis of PKIS2. 357 compounds demonstrate an SI(65) of <0.04 at 1  $\mu\text{M}$ , and thus inhibit less than 4% of the kinases in this screening panel with more than 65% inhibition at the 1  $\mu\text{M}$  screening concentration.

<https://doi.org/10.1371/journal.pone.0181585.g003>



Due to the differences in screening platforms (Nanosyn for PKIS and DiscoverX for PKIS2), we utilized different KCGS inclusion criteria for each set. PKIS was screened against a smaller panel of kinases than PKIS2 so we decided to use stricter selectivity criteria for PKIS compound selection. Experience indicates that as the number of kinase targets screened grows, additional kinases will be inhibited. Thus we chose SI(90) at a 1  $\mu$ M screening concentration for PKIS versus the SI(65) at 1  $\mu$ M for PKIS2. Based on this analysis of the screening data we have for PKIS and PKIS2 compounds, these two sets contain potent and narrow spectrum compounds for 122 non-overlapping kinases. This represents coverage of 28% (122/436) of the screenable kinome.

**Literature compounds suitable for inclusion:** With a goal of complementing PKIS/PKIS2, we surveyed the peer-reviewed literature for kinase inhibitors with activity on the existing gap kinases. This search was done in a non-automated manner, and thus it is likely there are high quality compounds we have not identified yet. Inhibitors were selected if the literature reported potency <100 nM activity on a gap kinase and if the compound appeared to display a suitable narrow spectrum profile through screening against at least 20 (ideally many more) other protein kinases. The selectivity element of this literature analysis is complicated by the wide variety of screening strategies utilized, with variation in compound screening concentration, composition of assay panel, assay format, and amount and detail of profiling data actually shared in each publication. Our analysis to date of publications originating from academia and industry has identified 152 potent and selective kinase inhibitors (S6 Table) that have activity on an additional 132 protein kinases (S7 Table) not covered by inhibitors selected from PKIS/PKIS2. These kinase inhibitors are candidates for inclusion into the KCGS pending permission to incorporate them, broader screening to standardize selectivity data, and confirmation of a narrow spectrum selectivity profile when screened across the kinome.

## A virtual kinase chemogenomic set

Fig 4 provides examples of compounds from PKIS, PKIS2, and the literature that meet criteria for inclusion in the KCGS, and examples of compounds that do not warrant inclusion because of insufficient selectivity.

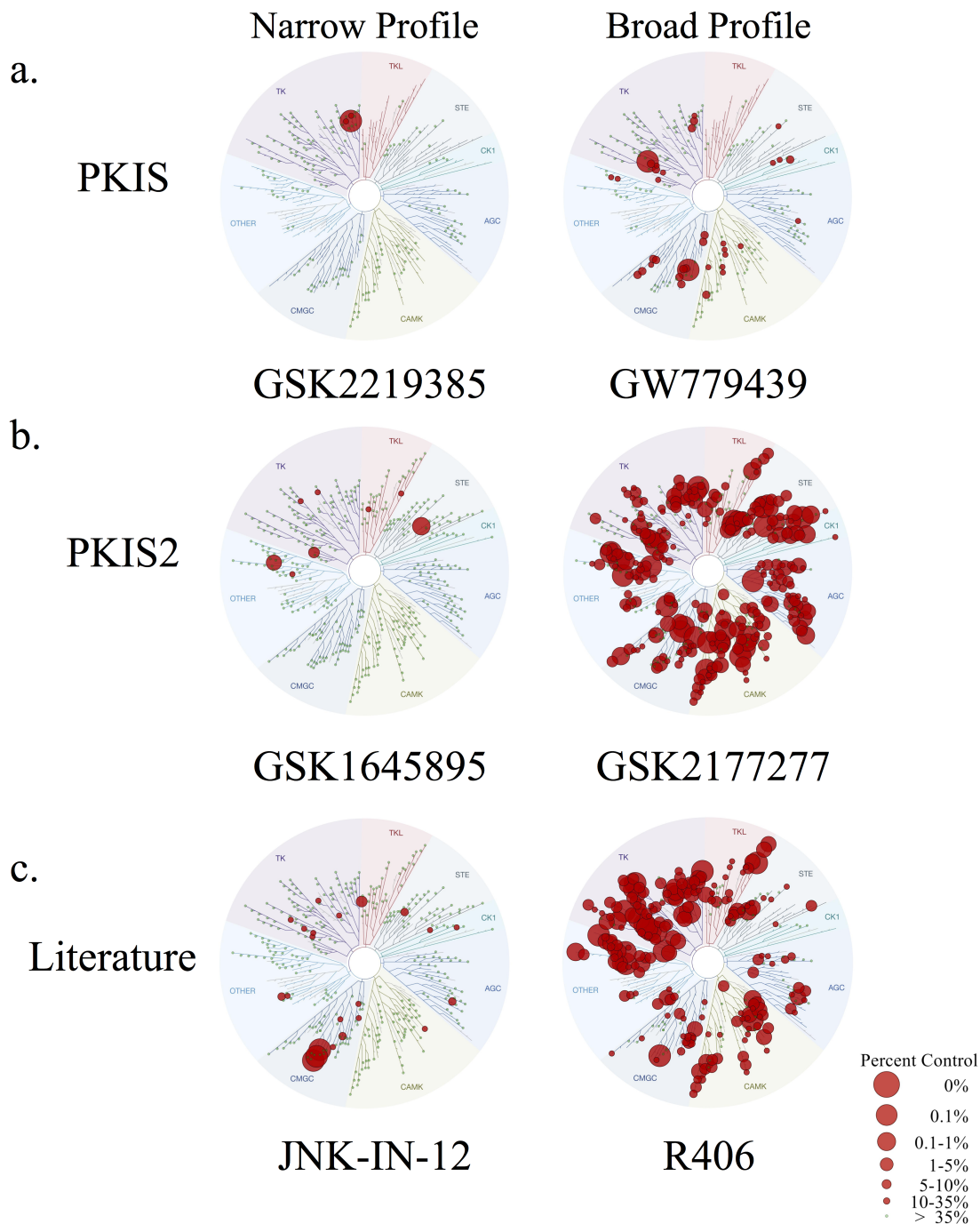
In total we have identified 390 potential narrow spectrum inhibitors from PKIS, PKIS2, and the peer-reviewed literature that demonstrate activity on 254/436 of the screenable human protein kinases (Fig 5). Assembly of these compounds into a single chemogenomic set would yield a collection of inhibitors that have useful activity on 58% of the currently screenable protein kinome.

However, there are limitations to this ‘virtual set’ of candidate chemogenomic compounds. First, many of the compounds have been screened on less than half of the currently available assays and may not meet our criteria for inclusion in the final set upon broader kinase activity profiling. Second, some of the published inhibitors may no longer be available in sufficient quantities for distribution requiring additional chemistry to resynthesize the compounds. Third, the set still fails to address 42% of the screenable protein kinome. Thus, additional work is required to reach the goal of building a comprehensive KCGS.

## The kinase chemogenomic consortium

To complete the design and construction of a KCGS with complete coverage of the screenable protein kinome, we have assembled a consortium of academic and industrial partners. The consortium has the following operating principles:

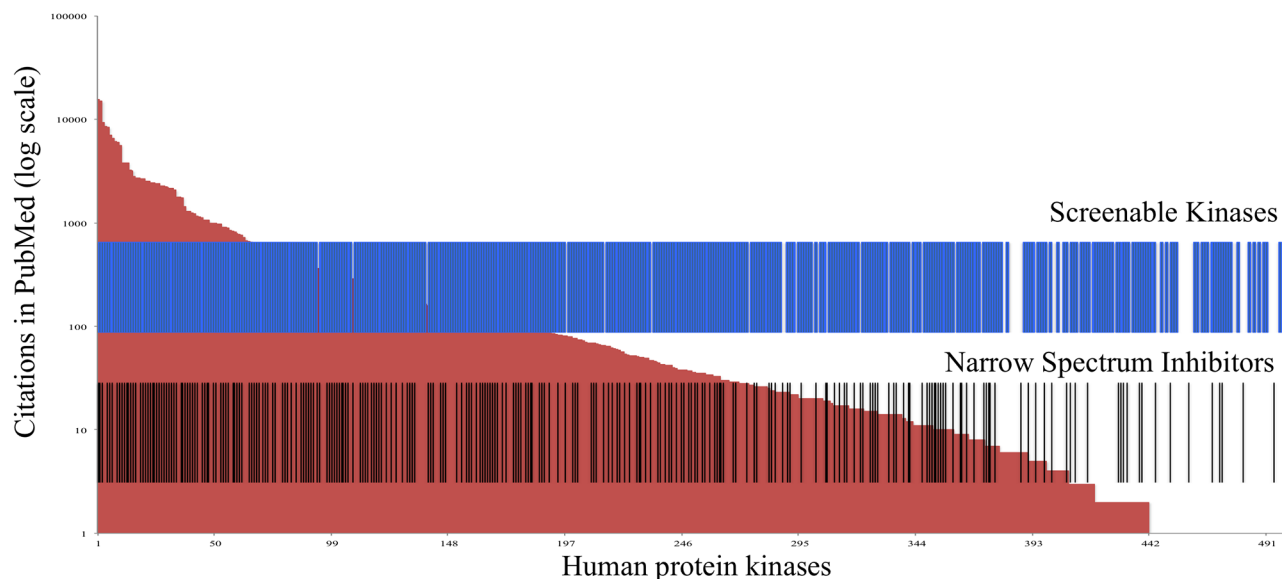
1. The comprehensive KCGS will be created as an openly available public resource to support basic research on kinases.



**Fig 4. Examples of compounds for the KCGS** from (a) PKIS, (b) PKIS2, and (c) the literature that are suitable (narrow) or not suitable (broad) for inclusion in the KCGS.

<https://doi.org/10.1371/journal.pone.0181585.g004>

- All compounds in the set will be narrow spectrum inhibitors meeting the potency and selectivity criteria defined above.
- Kinase profiling will be performed using the currently accessible commercial assays, and the set will be profiled in new assay formats that offer additional information as these become available (for example, in cell target engagement).



## 25 Most Cited Kinases

MAPK14, SRC, EGFR, PRKACA, MAPK3, KDR, ABL1, CDK1, KIT, CSF1R, MET, AKT1, CDK2, AKT2, IGF1R, JAK2, ERBB2, CAMK2A, PDGFRB, CDK4, MAPK1, PDGFRA, MAP2K1, RET, LCK

## 25 Least Cited Kinases

ULK3, TNIN3K, STK32C, STK32A, SIK3, SBK3, RPS6KB2, PEAK1, NEK5, NEK10, MYLK4, MYLK3, MLKL, MAPK15, MAP3K6, MAP3K15, MAK, DMPK, CSNK1A1L, COQ8B, CDK15, CDC42BPG, MINK1, ULK4, UHMK1

**Fig 5. Representation of the kinome coverage of the virtual set of 457 narrow spectrum inhibitors.** Red background shows the human protein kinases ranked by number of citations. Blue bars show the protein kinases for which an assay is available at one of 10 commercial vendors. Black bars identify protein kinases that are covered by the virtual set of inhibitors (subset of PKIS, PKIS2, and literature) described in the text.

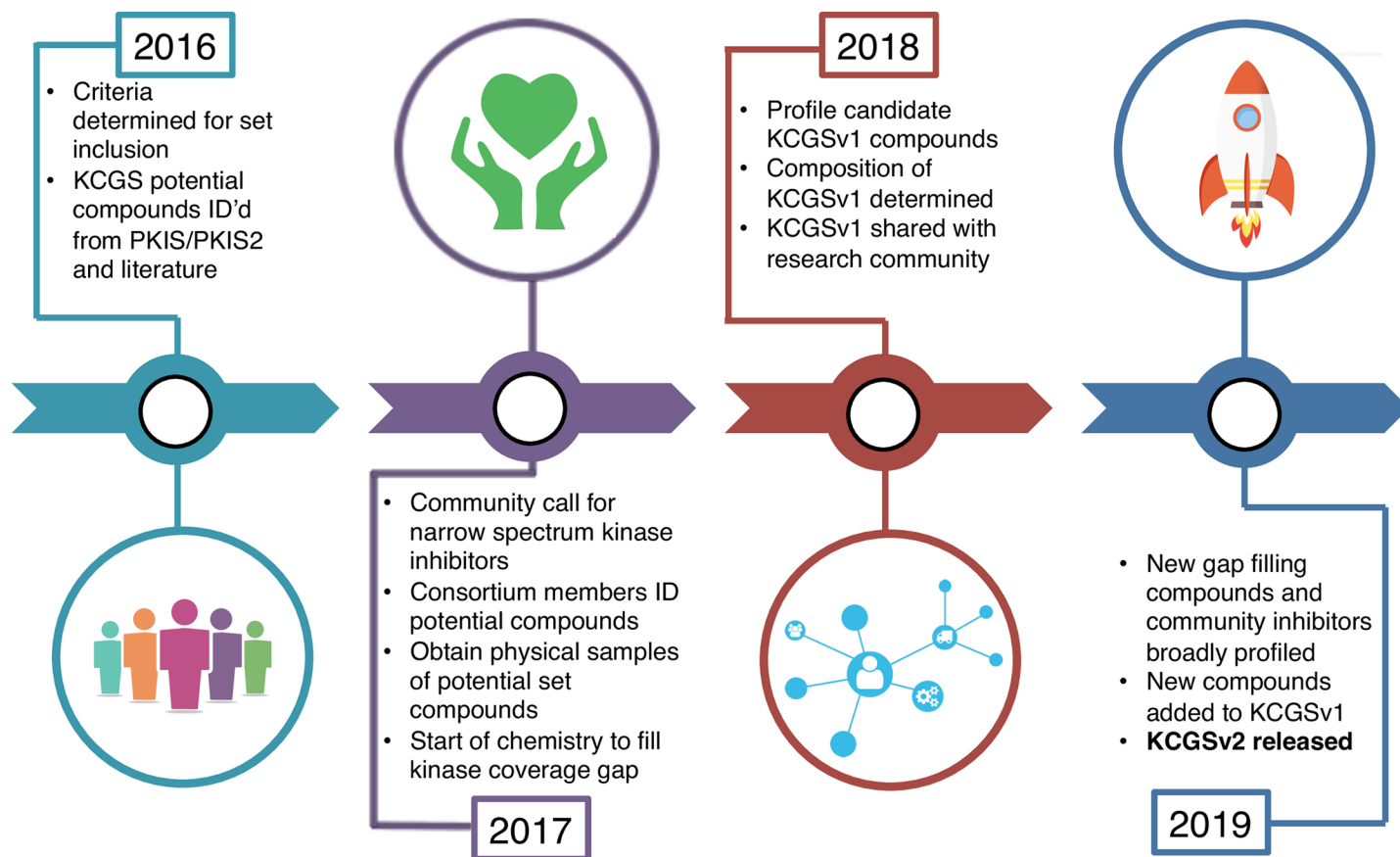
<https://doi.org/10.1371/journal.pone.0181585.g005>

4. All chemical structures and kinase activity data will be made publically available.
5. The comprehensive KCGS will be made available to all scientists that agree to be trustees of the set.[48]

The current PKIS/PKIS2/literature virtual set serves as the starting point for development of the comprehensive KCGS. We started this endeavor in 2016 and asked pharmaceutical company and academic partners for their ideas and input on set generation (Fig 6).

GSK, Pfizer and Takeda were the first members of the consortium to physically contribute samples and we anticipate several other pharmaceutical companies and academic labs will contribute to the set in 2017. This year, to start filling the gaps (gap kinases listed in S8 Table), we have asked current consortium members to identify and provide physical samples of kinase inhibitors that will cover additional kinases and likely have the requisite potency and selectivity to be included in the set. Our intent is that this publication serves as a call to *all* contributors in the research community to suggest other possible candidates from the literature or their own research to supplement this work. To be considered for the set the compounds must meet minimum criteria:

- Potency—more potent than 100 nM on gap kinase of interest
- Selectivity—profiled against at least 100 kinases with no more than 5% of the screened kinases more potent than 100 nM or >90% inhibition at 1μM



**Fig 6. Process map for construction of a public comprehensive protein kinase chemogenomic set (KCGS).**

<https://doi.org/10.1371/journal.pone.0181585.g006>

The compounds that we receive physical samples of will be sent for profiling against the screenable kinome. This will enable direct comparison of compounds in the same set of assays and conditions to evaluate potency and selectivity, and provide the information needed to make decisions on what compounds should be included in the final physical set. This data will also be placed in the public domain.

We realize that inhibitors of suitable quality may not currently exist for some of the uncovered kinases. For example, inhibitors that do exist for these gap kinases may be too promiscuous or not potent enough. This paper is also a call for input from the kinase medicinal chemistry community on what molecules to synthesize for these uncovered kinases based on available data and insight. If you can recommend modest starting points for gap kinases (potency between 100–500 nM; active on 5–15% of the kinome; ideally a chemotype not represented in PKIS/PKIS2), we would welcome a collaborative effort in which we work together on synthesis, screening, and funding of the project.

Current members of the consortium include the academic and industrial laboratories represented as coauthors of this paper. More importantly, membership of the kinase chemogenomic consortium remains open to any scientist who wishes to contribute to the creation of the comprehensive KCGS as a public resource. Membership in the consortium allows for access to pre-publication kinase screening data, medicinal chemistry collaboration with our team, broad kinome screening as required to ensure compound suitability, and a copy of the complete set, once finalized and created, for screening in phenotypic screens. One of the

operating principles of the KCGS is for consortium members to agree to be trustees of the set, and make decisions around the set with the public good in mind. When recipients sign up to obtain the KCGS they become a part of this community and agree to place data generated from screening KCGS into the public domain. This can take many forms—a publication, a public database (such as ChEMBL and PubChem), or just sending the screening results to the SGC. As new results become available, the SGC-UNC will post updated records of KCGS publications and data depositions. Availability of all results from screening the KCGS will be valuable to future users of the set and for improving KCGS over time. In summary, we welcome contributions of existing kinase inhibitors and submission of ideas for synthesis of new inhibitors that address any of the gap kinases. Scientists with interest in joining the consortium should contact David Drewry by email at [david.drewry@unc.edu](mailto:david.drewry@unc.edu).

## Conclusion

Creation of a comprehensive protein kinase chemogenomic set is a large undertaking that can best be accomplished as a collaborative effort. Importantly, notwithstanding the scale of the endeavor, it is a tractable problem. The combined effort of medicinal chemists over 20 years of kinase research has already laid the foundation to the extent that many of the compounds and much of the data already exist. While no one research group, university, or commercial organization has access to all of the best inhibitors, together as a community we can pool resources and knowledge to achieve the goal. Many of the compounds have already been synthesized, most of the screening assays are commercially available, and importantly there is strong scientific rationale to explore the full human kinome.

The comprehensive KCGS will have its greatest value only if it is freely available as a public resource. Use of the set in diverse disease relevant phenotypic screens and sharing of the resulting data in the public domain is the best mechanism to ensure that the therapeutic potential of as many protein kinases as possible will be uncovered. This effort will bring to light those kinases that deserve more detailed drug discovery efforts. Finally, additional incentive to build this set is provided by the important roles protein kinases have in non-mammalian species. Although the comprehensive protein kinase chemogenomic set will be designed to explore the human protein kinases, cross-species homology makes it likely that many of the inhibitors will have useful activity on parasite[49] and plant kinases[50, 51]. Thus, the work of the consortium will provide tools for other research sectors, and may lay the groundwork for development of comprehensive protein kinase chemogenomic sets for these other species.

Looking forward, the opportunity to use chemogenomic sets to explore the biology of other protein families beyond kinases cannot be overlooked. Analysis of many other druggable protein families reveals additional examples of the Harlow-Knapp effect: 90% of the research is focused on only 10% of the proteins[52]. For protein families where chemical connectivity between inhibitors can be demonstrated, such as phosphodiesterases (PDEs)[53], histone deacetylases (HDACs)[54], bromodomains[55], and non-olfactory G-protein coupled receptors (GPCRs)[56], we propose that development of publically available chemogenomic sets will be a profitable approach to expand our biological understanding of the human genome.

## Methods

### Simulations to estimate adequate set size for full kinome coverage

We conducted a simulation to estimate the theoretical number of compounds required to achieve kinome coverage under the selectivity criteria set forth herein. To accomplish this, we integrated over 1 million compound-kinase activity data points collected from the literature (examples[57–61]) and chemical repositories (PubChem, ChEMBL). We used these data to



calculate probabilities of co-inhibition at  $\geq 1 \mu\text{M}$  potency for pairs of kinases that were represented in the aggregate dataset. A total of 427 kinases had sufficient profiling data for inclusion in this exercise. The simulation of a compound's activity profile began by assigning activity to a randomly selected kinase, following which the activity was "diffused" to a variable number of additional kinases. Activity diffusion was constrained by the calculated probabilities of co-inhibition in order to reflect the pharmacological linkages observed between kinases within the existing chemical space. Simulated inhibition profiles that targeted  $\leq 15$  kinases at the computed potency level were appended to the virtual set, provided they did not overlap with previously incorporated profiles by more than 3 targets, and they did not include targets that are already inhibited by 5% of the total set of simulated compound profiles. Repeating this sequence until every kinase was inhibited by at least 3 simulated compounds revealed that an average of about 571 compounds was sufficient to achieve a set with all the desired attributes. Increasing the number of kinases from 427 to about 500 will require increasing the number of compounds to maintain coverage criteria. However, our current results suggest that this requirement is likely to remain well within the 1000–1500 compound limit.

### PKIS2 compound preparation and screening in KINOMEscan

All PKIS2 compounds were dissolved and stored at  $-20^\circ\text{C}$  as 10mM DMSO stocks. PKIS2 screening was performed using the commercially available KINOMEscan assay panel as previously described.[47] These assays are based upon a competition-binding assay that measures the ability of a small molecule to compete with an immobilized inhibitor for the active site. We screened the set at  $1 \mu\text{M}$  in singlicate against 468 kinases (including mutants and non-human kinases). The results are provided as the percentage of the kinase that remains bound to the immobilized inhibitor relative to a DMSO control (% control). We then converted these numbers into percent inhibition (%Inh):

$$\%Inh = 100 - \%control$$

Since the assay was only run in singlicate it was important to follow up actives with  $K_d$  determinations. We determined which compounds would get  $K_d$  values determined based on the SI(65), which is the number of kinases bound  $<65\%$  divided by the total number of assays. The compounds that had an SI(65)  $< 0.04$  and at least 1 kinase inhibited above 90% were followed up by obtaining  $K_d$  values for any kinase that was inhibited  $>80\%$ . Any kinase inhibitor that had an SI(65) less than 0.04, and was active ( $< 100\text{nM}$ ) on at least 1 kinase in these follow up  $K_d$  experiments, was marked as being a candidate for the KCGS.

### PKIS compound selection into the virtual kinase chemogenomic set

PKIS is a set of 367 kinase inhibitors originally profiled against 220 kinases at Nanosyn at 100 nM and 1000 nM.[25] For evaluation of compounds to be included in the chemogenomic set activity data at 1000 nM was used.

Selectivity Index (SI): For each compound, the SI was assessed at a threshold of 90% kinase inhibition. The SI was then computed as:

$$SI_{90} = 100 \frac{N_{hits}}{N_{total}}$$

In this equation,  $SI_{90}$  is the selectivity index at 90% inhibition,  $N_{hits}$  is the number of kinases inhibited by the compound at  $\geq 90\%$ , and  $N_{total}$  is the total of kinases against which the compound was tested. It should be noted that the selection of the inhibition threshold is arbitrary

and will influence the perceived selectivity of the compound. Moreover, kinase panels of different sizes should not be directly compared, as the SI is predicated upon  $N_{\text{total}}$ .

**Gini Coefficient:** The previously described methodology for the use of the Gini coefficient to express kinase inhibitor selectivity was followed.[62] In brief, this application of the Gini coefficient plots the cumulative fraction of total inhibition against the cumulative fraction of assayed kinases, arranged from least inhibited to most inhibited, and calculates the ratio of the area between the linear diagonal and cumulative inhibition curve to the area under the linear diagonal. A linear increase in cumulative inhibition thus results in a value closer to zero and indicates low selectivity. Compounds with high selectivity, on the other hand, show a slow rise in cumulative inhibition at the beginning, and a steep rise towards the end (Lorenz curve), thereby resulting in a Gini coefficient closer to 1. Values closer to 1 indicate “selective” compounds, while values approaching 0 indicate “promiscuous” compounds. It should be noted that Gini coefficients can be computed regardless of the number of kinases against which the compound was tested. Thus, the values for any compound can be directly compared.

**Entropy Score:** The entropy score, previously described by a team at the Netherlands Translational Research Center to identify selective kinase inhibitors quantifies the distribution of a compound’s inhibition activity over a panel of kinases, analogous to the distribution of a thermodynamic system over multiple energy states.[63] Thus a small entropy score indicates high selectivity (narrow distribution), while a high entropy score indicates low selectivity (broad distribution). The score was originally developed for  $IC_{50}$  (or  $K_d$ ) measurements and was modified for single-point inhibition data. The following steps were implemented to calculate the entropy score for each compound within the panel of kinases against which it was tested:

1. Convert percent inhibition (%I) at 1000 nM (1  $\mu$ M) to  $IC_{50}$  using the equation:

$$IC_{50} = \frac{100 - \%I}{\%I}$$

*note: if 100% inhibition was the reported result, 99.5%I was used in this calculation*

2. Compute  $K_a$  values for each kinase by  $1/IC_{50}$
3. Sum all respective  $K_a$  values to generate  $\Sigma K_a$
4. For each individual  $K_a$  value, calculate  $K_a / \Sigma K_a$
5. For each individual  $K_a$ , then calculate  $(K_a / \Sigma K_a) * \ln(K_a / \Sigma K_a)$
6. Sum each associated value from (5) and multiple by -1 to obtain the resultant entropy score

Compounds from PKIS were selected as candidates for the KCGS if they met one of three criteria:

Gini: >0.75

Entropy: <1.65

Selectivity index S(10) at 1  $\mu$ M:  $0 < x < 0.02$

Potency: At least 1 kinase inhibited >90% Inhibition

If only the Gini measurement criterion was met then for that compound to be considered it had to inhibit no more than 7 kinases above 90% inhibition at the 1  $\mu$ M screening concentration. For purposes of set inclusion only the Nanosyn data was utilized.

## Literature compound selection for the kinase chemogenomic set

Due to the varying assay types and formats that were employed in the literature some basic rules were followed to identify compounds that have the potential to be included in the KCGS. For eventual inclusion, systematic broad screening will need to be completed.

Panel size—compound must have been screened against at least 20 other kinases to assess selectivity; if the panel is small the kinases represented should come from different parts of the kinome

Potency—must be at least 100 nM or 90% inhibition at 1  $\mu$ M

Selectivity—must not inhibit more than 10 kinases above 90% inhibition at 1  $\mu$ M

## Supporting information

**S1 Table. Kinase assays by vendor.**

(PDF)

**S2 Table. List of PKIS1 compounds that meet criteria for KCGS inclusion.**

(PDF)

**S3 Table. PKIS2  $K_d$  determinations.**

(PDF)

**S4 Table. Full PKIS2 dataset from KINOMEscan panel.**

(XLSX)

**S5 Table. List of PKIS2 compounds that meet criteria for KCGS inclusion.**

(PDF)

**S6 Table. List of literature compounds that meet kinase potency and selectivity criteria but will require additional screening to ensure suitability for KCGS.**

(PDF)

**S7 Table. List of additional kinases (beyond those covered by PKIS and PKIS2 compounds) that can be covered by literature compounds (pending further kinome wide cross screening).**

(PDF)

**S8 Table. List of gap kinases—kinases that we currently do not cover with a compound that has sufficient selectivity and/or potency.**

(PDF)

## Acknowledgments

This work was funded by the UNC Eshelman Institute for Innovation.

The SGC is a registered charity (number 1097737) that receives funds from AbbVie, Bayer Pharma AG, Boehringer Ingelheim, Canada Foundation for Innovation, Eshelman Institute for Innovation, Genome Canada, Innovative Medicines Initiative (EU/EFPIA) [ULTRA-DD grant no. 115766], Janssen, Merck & Co., Novartis Pharma AG, Ontario Ministry of Economic Development and Innovation, Pfizer, São Paulo Research Foundation-FAPESP, Takeda, and Wellcome Trust [092809/Z/10/Z].

The authors thank Aled Edwards (SGC), Christian Fischer (Merck & Co.), Amy Donner (SGC and Chemical Probes Portal), Heather King (Chemical Probes Portal), Dave Morris

(SGC and UNC Catalyst for Rare Diseases), and Matthew Robers (Promega Corp.) for helpful discussions and feedback.

GlaxoSmithKline, Pfizer, and Takeda are gratefully acknowledged for donation of PKIS2 compounds.

## Author Contributions

**Conceptualization:** David H. Drewry, Carrow I. Wells, David M. Andrews, Richard Angell, Hassan Al-Ali, Alison D. Axtman, Jonathan M. Elkins, Peter Ettmayer, Mathias Frederiksen, Opher Gileadi, Nathanael Gray, Alice Hooper, Stefan Knapp, Stefan Laufer, Ulrich Luecking, Michael Michaelides, Susanne Müller, R. Aldrin Denny, Kumar S. Saikatendu, William J. Zuercher, Timothy M. Willson.

**Data curation:** David H. Drewry, Carrow I. Wells, Alison D. Axtman, Alice Hooper, William J. Zuercher.

**Formal analysis:** David H. Drewry, Carrow I. Wells, Hassan Al-Ali, Alison D. Axtman, Stephen J. Capuzzi, Alice Hooper, Eugene Muratov, Daniel K. Treiber, William J. Zuercher.

**Investigation:** David H. Drewry, Carrow I. Wells, Alison D. Axtman, William J. Zuercher.

**Methodology:** David H. Drewry, Carrow I. Wells, Hassan Al-Ali, Alison D. Axtman, William J. Zuercher.

**Project administration:** David H. Drewry.

**Supervision:** David H. Drewry, Timothy M. Willson.

**Visualization:** Carrow I. Wells, Daniel K. Treiber.

**Writing – original draft:** David H. Drewry, Carrow I. Wells, Stephen J. Capuzzi, Timothy M. Willson.

**Writing – review & editing:** David H. Drewry, Carrow I. Wells, Richard Angell, Hassan Al-Ali, Alison D. Axtman, Jonathan M. Elkins, Opher Gileadi, Stefan Knapp, Susanne Müller, Daniel K. Treiber, William J. Zuercher, Timothy M. Willson.

## References

1. Manning G, Whyte DB, Martinez R, Hunter T, Sudarsanam S. The protein kinase complement of the human genome. *Science*. 2002; 298(5600):1912–34. <https://doi.org/10.1126/science.1075762> PMID: 12471243.
2. Wu P, Nielsen TE, Clausen MH. FDA-approved small-molecule kinase inhibitors. *Trends in Pharmacological Sciences*. 2015; 36(7):422–39. <http://dx.doi.org/10.1016/j.tips.2015.04.005>. <https://doi.org/10.1016/j.tips.2015.04.005> PMID: 25975227
3. Gross S, Rahal R, Stransky N, Lengauer C, Hoeflich KP. Targeting cancer with kinase inhibitors. *The Journal of Clinical Investigation*. 2015; 125(5):1780–9. <https://doi.org/10.1172/JCI76094> PMID: 25932675
4. Fabbro D, Cowan-Jacob SW, Moebitz H. Ten things you should know about protein kinases: IUPHAR Review 14. *British Journal of Pharmacology*. 2015; 172(11):2675–700. doi: [10.1111/bph.13096](https://doi.org/10.1111/bph.13096). PMC4439867. PMID: 25630872
5. Roskoski R Jr. A historical overview of protein kinases and their targeted small molecule inhibitors. *Pharmacol Res*. 2015; 100:1–23. <https://doi.org/10.1016/j.phrs.2015.07.010> PMID: 26207888.
6. Fabbro D. 25 Years of Small Molecular Weight Kinase Inhibitors: Potentials and Limitations. *Molecular Pharmacology*. 2015; 87(5):766. <https://doi.org/10.1124/mol.114.095489> PMID: 25549667
7. Fedorov O, Muller S, Knapp S. The (un)targeted cancer kinome. *Nat Chem Biol*. 2010; 6(3):166–9. <https://doi.org/10.1038/nchembio.297> PMID: 20154661.
8. Knapp S, Arruda P, Blagg J, Burley S, Drewry DH, Edwards A, et al. A public-private partnership to unlock the untargeted kinome. *Nat Chem Biol*. 2013; 9(1):3–6. <https://doi.org/10.1038/nchembio.1113> PMID: 23238671.

9. Arrowsmith CH, Audia JE, Austin C, Baell J, Bennett J, Blagg J, et al. The promise and peril of chemical probes. *Nat Chem Biol*. 2015; 11(8):536–41. <https://doi.org/10.1038/nchembio.1867> PMID: 26196764; PubMed Central PMCID: PMC4706458.
10. King AJ, Patrick DR, Batorsky RS, Ho ML, Do HT, Zhang SY, et al. Demonstration of a genetic therapeutic index for tumors expressing oncogenic BRAF by the kinase inhibitor SB-590885. *Cancer Res*. 2006; 66(23):11100–5. <https://doi.org/10.1158/0008-5472.CAN-06-2554> PMID: 17145850.
11. Markowitz D, Powell C, Tran NL, Berens ME, Ryken TC, Vanan M, et al. Pharmacological Inhibition of the Protein Kinase MRK/ZAK Radiosensitizes Medulloblastoma. *Mol Cancer Ther*. 2016; 15(8):1799–808. <https://doi.org/10.1158/1535-7163.MCT-15-0849> PMID: 27207779.
12. Liu F, Wang J, Yang X, Li B, Wu H, Qi S, et al. Discovery of a Highly Selective STK16 Kinase Inhibitor. *ACS Chem Biol*. 2016; 11(6):1537–43. <https://doi.org/10.1021/acscchembio.6b00250> PMID: 27082499.
13. Mason JM, Lin DC, Wei X, Che Y, Yao Y, Kiarash R, et al. Functional characterization of CFI-400945, a Polo-like kinase 4 inhibitor, as a potential anticancer agent. *Cancer Cell*. 2014; 26(2):163–76. <https://doi.org/10.1016/j.ccr.2014.05.006> PMID: 25043604.
14. Luo T, Masson K, Jaffe JD, Silkworth W, Ross NT, Scherer CA, et al. STK33 kinase inhibitor BRD-8899 has no effect on KRAS-dependent cancer cell viability. *Proc Natl Acad Sci U S A*. 2012; 109(8):2860–5. <https://doi.org/10.1073/pnas.1120589109> PMID: 22323609; PubMed Central PMCID: PMC3286931.
15. Jones LH, Bunnage ME. Applications of chemogenomic library screening in drug discovery. *Nat Rev Drug Discov*. 2017; advance online publication. <https://doi.org/10.1038/nrd.2016.244> PMID: 28104905
16. Breinig M, Klein FA, Huber W, Boutros M. A chemical–genetic interaction map of small molecules using high-throughput imaging in cancer cells. *Molecular Systems Biology*. 2015; 11(12). <https://doi.org/10.15252/msb.20156400> PMID: 26700849
17. Iorio F, Knijnenburg Theo A, Vis Daniel J, Bignell Graham R, Menden Michael P, Schubert M, et al. A Landscape of Pharmacogenomic Interactions in Cancer. *Cell*. 166(3):740–54. <https://doi.org/10.1016/j.cell.2016.06.017> PMID: 27397505
18. Seashore-Ludlow B, Rees MG, Cheah JH, Cokol M, Price EV, Coletti ME, et al. Harnessing Connectivity in a Large-Scale Small-Molecule Sensitivity Dataset. *Cancer Discovery*. 2015; 5(11):1210–23. <https://doi.org/10.1158/2159-8290.CD-15-0235> PMID: 26482930
19. Hong AL, Tseng Y-Y, Cowley GS, Jonas O, Cheah JH, Kynnap BD, et al. Integrated genetic and pharmacologic interrogation of rare cancers. *Nature Communications*. 2016; 7:11987. <https://doi.org/10.1038/ncomms11987> <http://www.nature.com/articles/ncomms11987>—supplementary-information. PMID: 27329820
20. Bogen D, Wei JS, Azorsa DO, Ormanoglu P, Buehler E, Guha R, et al. Aurora B kinase is a potent and selective target in MYCN-driven neuroblastoma. *Oncotarget*. 2015; 6(34):35247–62. <https://doi.org/10.18632/oncotarget.6208> PMID: 26497213
21. Fink LS, Beatty A, Devarajan K, Peri S, Peterson JR. Pharmacological profiling of kinase dependency in cell lines across triple-negative breast cancer subtypes. *Molecular cancer therapeutics*. 2015; 14(1):298–306. doi: [10.1158/1535-7163.MCT-14-0529](https://doi.org/10.1158/1535-7163.MCT-14-0529). PMC4297247. PMID: 25344583
22. Ryall KA, Shin J, Yoo M, Hinz TK, Kim J, Kang J, et al. Identifying kinase dependency in cancer cells by integrating high-throughput drug screening and kinase inhibition data. *Bioinformatics*. 2015; 31(23):3799–806. doi: [10.1093/bioinformatics/btv427](https://doi.org/10.1093/bioinformatics/btv427). PMC4675831. PMID: 26206305
23. Tyner JW, Yang WF, Bankhead A, Fan G, Fletcher LB, Bryant J, et al. Kinase Pathway Dependence in Primary Human Leukemias Determined by Rapid Inhibitor Screening. *Cancer research*. 2013; 73(1):285–96. doi: [10.1158/0008-5472.CAN-12-1906](https://doi.org/10.1158/0008-5472.CAN-12-1906). PMC3537897. PMID: 23087056
24. Drewry DH, Willson TM, Zuercher WJ. Seeding Collaborations to Advance Kinase Science with the GSK Published Kinase Inhibitor Set (PKIS). *Current Topics in Medicinal Chemistry*. 2014; 14(3):340–2. doi: [10.2174/1568026613666131127160819](https://doi.org/10.2174/1568026613666131127160819). PMC4435035. PMID: 24283969
25. Elkins JM, Fedele V, Szklarz M, Abdul Azeez KR, Salah E, Mikolajczyk J, et al. Comprehensive characterization of the Published Kinase Inhibitor Set. *Nat Biotechnol*. 2016; 34(1):95–103. <https://doi.org/10.1038/nbt.3374> PMID: 26501955.
26. Homan KT, Larimore KM, Elkins JM, Szklarz M, Knapp S, Tesmer JJG. Identification and Structure–Function Analysis of Subfamily Selective G Protein-Coupled Receptor Kinase Inhibitors. *ACS Chemical Biology*. 2015; 10(1):310–9. <https://doi.org/10.1021/cb5006323> PMID: 25238254
27. Eckhart AD, Ozaki T, Tevaearai H, Rockman HA, Koch WJ. Vascular-Targeted Overexpression of G Protein-Coupled Receptor Kinase-2 in Transgenic Mice Attenuates  $\beta$ -Adrenergic Receptor Signaling and Increases Resting Blood Pressure. *Molecular Pharmacology*. 2002; 61(4):749. PMID: 11901213
28. Managò F, Espinoza S, Salahpour A, Sotnikova TD, Caron MG, Premont RT, et al. The role of GRK6 in animal models of Parkinson's Disease and L-DOPA treatment. *Scientific Reports*. 2012; 2:301.



- <https://doi.org/10.1038/srep00301> <http://www.nature.com/articles/srep00301>—supplementary-information. PMID: 22393477
29. Tiedemann RE, Zhu YX, Schmidt J, Yin H, Shi C-X, Que Q, et al. Kinome-wide RNAi studies in human multiple myeloma identify vulnerable kinase targets, including a lymphoid-restricted kinase, GRK6. *Blood*. 2010; 115(8):1594–604. doi: [10.1182/blood-2009-09-243980](https://doi.org/10.1182/blood-2009-09-243980). PMC2830764. PMID: 19996089
30. Hildebrand JM, Tanzer MC, Lucet IS, Young SN, Spall SK, Sharma P, et al. Activation of the pseudokinase MLKL unleashes the four-helix bundle domain to induce membrane localization and necroptotic cell death. *Proceedings of the National Academy of Sciences*. 2014; 111(42):15072–7. <https://doi.org/10.1073/pnas.1408987111> PMID: 25288762
31. Amata E, Xi H, Colmenarejo G, Gonzalez-Diaz R, Cordon-Obras C, Berlanga M, et al. Identification of “Preferred” Human Kinase Inhibitors for Sleeping Sickness Lead Discovery. Are Some Kinases Better than Others for Inhibitor Repurposing? *ACS Infectious Diseases*. 2016; 2(3):180–6. <https://doi.org/10.1021/acsinfecdis.5b00136> PMID: 26998514
32. Al-Ali H, Lee D-H, Danzi MC, Nassif H, Gautam P, Wennerberg K, et al. Rational Polypharmacology: Systematically Identifying and Engaging Multiple Drug Targets To Promote Axon Growth. *ACS Chemical Biology*. 2015; 10(8):1939–51. <https://doi.org/10.1021/acschembio.5b00289> PMID: 26056718
33. Scheipl S, Barnard M, Cottone L, Jorgensen M, Drewry DH, Zuercher WJ, et al. EGFR inhibitors identified as a potential treatment for chordoma in a focused compound screen. *The Journal of Pathology*. 2016; 239(3):320–34. doi: [10.1002/path.4729](https://doi.org/10.1002/path.4729). PMC4922416. PMID: 27102572
34. Derbyshire ER, Zuzarte-Luís V, Magalhães AD, Kato N, Sanschagrin PC, Wang J, et al. Chemical interrogation of malarial host and parasite kinomes. *ChemBiochem: a European journal of chemical biology*. 2014; 15(13):1920–30. doi: [10.1002/cbic.201400025](https://doi.org/10.1002/cbic.201400025). PMC4237307. PMID: 25111632
35. Long T, Neitz RJ, Beasley R, Kalyanaraman C, Suzuki BM, Jacobson MP, et al. Structure-Bioactivity Relationship for Benzimidazole Thiophene Inhibitors of Polo-Like Kinase 1 (PLK1), a Potential Drug Target in *Schistosoma mansoni*. *PLOS Neglected Tropical Diseases*. 2016; 10(1):e0004356. <https://doi.org/10.1371/journal.pntd.0004356> PMID: 26751972
36. Simpson C, Jones NG, Hull-Ryde EA, Kireev D, Stashko M, Tang K, et al. Identification of Small Molecule Inhibitors That Block the *Toxoplasma gondii* Rho GTPase Kinase ROP18. *ACS Infectious Diseases*. 2016; 2(3):194–206. <https://doi.org/10.1021/acsinfecdis.5b00102> PMID: 27379343
37. Mardilovich K, Baugh M, Crighton D, Kowalczyk D, Gabrielsen M, Munro J, et al. LIM kinase inhibitors disrupt mitotic microtubule organization and impair tumor cell proliferation. *Oncotarget*. 2015; 6(36):38469–86. PMC4770715. <https://doi.org/10.18632/oncotarget.6288> PMID: 26540348
38. Guo K, Shelat AA, Guy RK, Kastan MB. Development of a Cell-Based, High-Throughput Screening Assay for ATM Kinase Inhibitors. *Journal of Biomolecular Screening*. 2014; 19(4):538–46. <https://doi.org/10.1177/1087057113520325> PMID: 24464432
39. Urlick AK, Hawk LML, Cassel MK, Mishra NK, Liu S, Adhikari N, et al. Dual screening of BPTF and Brd4 using protein-observed fluorine NMR uncovers new bromodomain probe molecules. *ACS chemical biology*. 2015; 10(10):2246–56. doi: [10.1021/acschembio.5b00483](https://doi.org/10.1021/acschembio.5b00483). PMC4858447. PMID: 26158404
40. Ember SWJ, Zhu J-Y, Olesen SH, Martin MP, Becker A, Berndt N, et al. Acetyl-lysine Binding Site of Bromodomain-Containing Protein 4 (BRD4) Interacts with Diverse Kinase Inhibitors. *ACS Chemical Biology*. 2014; 9(5):1160–71. <https://doi.org/10.1021/cb500072z> PMID: 24568369
41. Thorne CA, Wichaidit C, Coster AD, Posner BA, Wu LF, Altschuler SJ. GSK-3 modulates cellular responses to a broad spectrum of kinase inhibitors. *Nat Chem Biol*. 2015; 11(1):58–63. <https://doi.org/10.1038/nchembio.1690> <http://www.nature.com/nchembio/journal/v11/n1/abs/nchembio.1690.html>—supplementary-information. PMID: 25402767
42. Lipchik AM, Perez M, Bolton S, Dumrongprechachan V, Ouellette SB, Cui W, et al. KINATEST-ID: A Pipeline To Develop Phosphorylation-Dependent Terbium Sensitizing Kinase Assays. *Journal of the American Chemical Society*. 2015; 137(7):2484–94. <https://doi.org/10.1021/ja507164a> PMID: 25689372
43. Atkinson Jennifer M, Shelat Anang A, Carcaboso Angel M, Kranenburg Tanya A, Arnold LA, Boulos N, et al. An Integrated In Vitro and In Vivo High-Throughput Screen Identifies Treatment Leads for Ependymoma. *Cancer Cell*. 20(3):384–99. <https://doi.org/10.1016/j.ccr.2011.08.013> PMID: 21907928
44. Preston S, Jabbar A, Nowell C, Joachim A, Rutkowski B, Baell J, et al. Low cost whole-organism screening of compounds for anthelmintic activity. *International Journal for Parasitology*. 2015; 45(5):333–43. <http://dx.doi.org/10.1016/j.ijpara.2015.01.007>. <https://doi.org/10.1016/j.ijpara.2015.01.007> PMID: 25746136
45. Smyth LA, Collins I. Measuring and interpreting the selectivity of protein kinase inhibitors. *J Chem Biol*. 2009; 2(3):131–51. <https://doi.org/10.1007/s12154-009-0023-9> PMID: 19568781; PubMed Central PMCID: PMC2725273.

46. Boudeau J, Miranda-Saavedra D, Barton GJ, Alessi DR. Emerging roles of pseudokinases. *Trends in Cell Biology*. 2006; 16(9):443–52. <http://dx.doi.org/10.1016/j.tcb.2006.07.003>. <https://doi.org/10.1016/j.tcb.2006.07.003> PMID: 16879967
47. Davis MI, Hunt JP, Herrgard S, Ciceri P, Wodicka LM, Pallares G, et al. Comprehensive analysis of kinase inhibitor selectivity. *Nat Biotechnol*. 2011; 29(11):1046–51. <https://doi.org/10.1038/nbt.1990> PMID: 22037378.
48. Edwards A, Chawaf AA, Andrusiak K, Charney R, Zarya Cynader, El-Dessouki A, et al. A Trust approach to share research reagents openly. *Science Trans Med*. 2017:in press.
49. Crowther GJ, Hillesland HK, Keyloun KR, Reid MC, Lafuente-Monasterio MJ, Ghidelli-Disse S, et al. Biochemical Screening of Five Protein Kinases from *Plasmodium falciparum* against 14,000 Cell-Active Compounds. *PLoS One*. 2016; 11(3):e0149996. <https://doi.org/10.1371/journal.pone.0149996> PMID: 26934697; PubMed Central PMCID: PMC4774911.
50. Zulawski M, Schulze G, Braginets R, Hartmann S, Schulze WX. The Arabidopsis Kinome: phylogeny and evolutionary insights into functional diversification. *BMC Genomics*. 2014; 15:548. <https://doi.org/10.1186/1471-2164-15-548> PMID: 24984858; PubMed Central PMCID: PMC4112214.
51. Marshall A, Aalen RB, Audenaert D, Beeckman T, Broadley MR, Butenko MA, et al. Tackling drought stress: receptor-like kinases present new approaches. *Plant Cell*. 2012; 24(6):2262–78. <https://doi.org/10.1105/tpc.112.096677> PMID: 22693282; PubMed Central PMCID: PMC406892.
52. Edwards AM, Isserlin R, Bader GD, Frye SV, Willson TM, Yu FH. Too many roads not taken. *Nature*. 2011; 470(7333):163–5. <https://doi.org/10.1038/470163a> PMID: 21307913.
53. Maurice DH, Ke H, Ahmad F, Wang Y, Chung J, Manganiello VC. Advances in targeting cyclic nucleotide phosphodiesterases. *Nat Rev Drug Discov*. 2014; 13(4):290–314. <https://doi.org/10.1038/nrd4228> PMID: 24687066; PubMed Central PMCID: PMC4155750.
54. Falkenberg KJ, Johnstone RW. Histone deacetylases and their inhibitors in cancer, neurological diseases and immune disorders. *Nat Rev Drug Discov*. 2014; 13(9):673–91. <https://doi.org/10.1038/nrd4360> PMID: 25131830.
55. Filippakopoulos P, Knapp S. Targeting bromodomains: epigenetic readers of lysine acetylation. *Nat Rev Drug Discov*. 2014; 13(5):337–56. <https://doi.org/10.1038/nrd4286> PMID: 24751816.
56. Roth BL, Kroeze WK. Integrated Approaches for Genome-wide Interrogation of the Druggable Non-olfactory G Protein-coupled Receptor Superfamily. *J Biol Chem*. 2015; 290(32):19471–7. <https://doi.org/10.1074/jbc.R115.654764> PMID: 26100629; PubMed Central PMCID: PMC4528112.
57. Szwajda A, Gautam P, Karhinen L, Jha Sawan K, Saarela J, Shakyawar S, et al. Systematic Mapping of Kinase Addiction Combinations in Breast Cancer Cells by Integrating Drug Sensitivity and Selectivity Profiles. *Chemistry & Biology*. 2015; 22(8):1144–55. <http://dx.doi.org/10.1016/j.chembiol.2015.06.021>.
58. Christmann-Franck S, van Westen GJP, Papadatos G, Beltran Escudie F, Roberts A, Overington JP, et al. Unprecedentedly Large-Scale Kinase Inhibitor Set Enabling the Accurate Prediction of Compound–Kinase Activities: A Way toward Selective Promiscuity by Design? *Journal of Chemical Information and Modeling*. 2016; 56(9):1654–75. doi: [10.1021/acs.jcim.6b00122](https://doi.org/10.1021/acs.jcim.6b00122). PMC5039764. PMID: 27482722
59. Tang J, Szwajda A, Shakyawar S, Xu T, Hintsanen P, Wennerberg K, et al. Making Sense of Large-Scale Kinase Inhibitor Bioactivity Data Sets: A Comparative and Integrative Analysis. *Journal of Chemical Information and Modeling*. 2014; 54(3):735–43. <https://doi.org/10.1021/ci400709d> PMID: 24521231
60. Bamborough P, Drewry D, Harper G, Smith GK, Schneider K. Assessment of Chemical Coverage of Kinome Space and Its Implications for Kinase Drug Discovery. *Journal of Medicinal Chemistry*. 2008; 51(24):7898–914. <https://doi.org/10.1021/jm8011036> PMID: 19035792
61. Metz JT, Johnson EF, Soni NB, Merta PJ, Kifle L, Hajduk PJ. Navigating the kinome. *Nat Chem Biol*. 2011; 7(4):200–2. <http://www.nature.com/nchembio/journal/v7/n4/abs/nchembio.530.html>—supplementary-information. <https://doi.org/10.1038/nchembio.530> PMID: 21336281
62. Graczyk PP. Gini Coefficient: A New Way To Express Selectivity of Kinase Inhibitors against a Family of Kinases. *Journal of Medicinal Chemistry*. 2007; 50(23):5773–9. <https://doi.org/10.1021/jm070562u> PMID: 17948979
63. Uitdehaag JCM, Zaman GJR. A theoretical entropy score as a single value to express inhibitor selectivity. *BMC Bioinformatics*. 2011; 12(1):94. <https://doi.org/10.1186/1471-2105-12-94> PMID: 21486481